

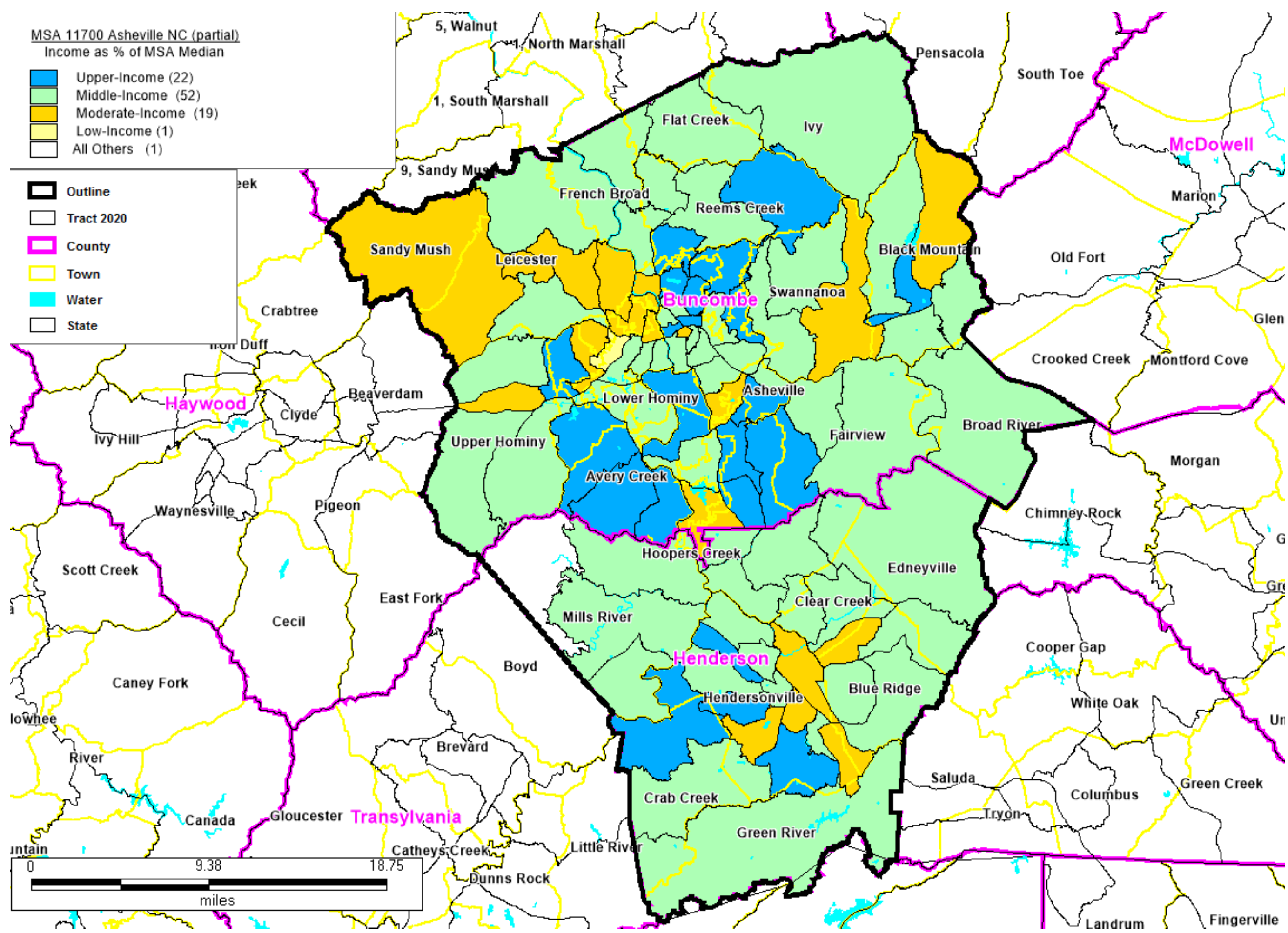
A map of MSA 39580 Raleigh-Cary NC (Partial) Income as % of the MSA Median: Upper-Income (92), Middle-Income (77), Moderate-Income (39), Low-Income (15), All Others (7) Outline - shown in a Black outline, County - shown in a pink outline, Tract 2024 - shown in a Black outline, Town - shown in a yellow outline, Water - shown in a blue outline, State - shown in a Black outline

NORTH CAROLINA

MSA 39580 Raleigh-Cary NC (Partial)

FORMAT: STATECODE/COUNTYCODE/TRACTCODE

37/183/0501.00, 37/183/0503.00, 37/183/0504.00, 37/183/0505.00, 37/183/0506.00, 37/183/0507.00, 37/183/0508.00, 37/183/0509.00, 37/183/0510.00, 37/183/0511.01, 37/183/0511.02, 37/183/0512.00, 37/183/0514.00, 37/183/0515.01, 37/183/0515.02, 37/183/0516.00, 37/183/0517.00, 37/183/0518.00, 37/183/0519.00, 37/183/0520.01, 37/183/0520.02, 37/183/0521.01, 37/183/0521.02, 37/183/0523.03, 37/183/0523.04, 37/183/0523.05, 37/183/0523.06, 37/183/0523.07, 37/183/0524.01, 37/183/0524.04, 37/183/0524.07, 37/183/0524.08, 37/183/0524.09, 37/183/0524.10, 37/183/0524.11, 37/183/0525.04, 37/183/0525.05, 37/183/0525.06, 37/183/0525.07, 37/183/0525.08, 37/183/0525.09, 37/183/0526.01, 37/183/0526.02, 37/183/0526.03, 37/183/0527.01, 37/183/0527.04, 37/183/0527.05, 37/183/0527.06, 37/183/0527.07, 37/183/0528.01, 37/183/0528.02, 37/183/0528.07, 37/183/0528.09, 37/183/0528.10, 37/183/0528.11, 37/183/0528.12, 37/183/0528.13, 37/183/0528.14, 37/183/0528.15, 37/183/0528.16, 37/183/0529.01, 37/183/0529.02, 37/183/0529.03, 37/183/0529.05, 37/183/0529.06, 37/183/0530.03, 37/183/0530.04, 37/183/0530.05, 37/183/0530.06, 37/183/0530.07, 37/183/0530.09, 37/183/0530.10, 37/183/0530.11, 37/183/0531.05, 37/183/0531.06, 37/183/0531.09, 37/183/0531.10, 37/183/0531.11, 37/183/0531.12, 37/183/0531.13, 37/183/0531.14, 37/183/0531.15, 37/183/0532.02, 37/183/0532.03, 37/183/0532.04, 37/183/0532.05, 37/183/0532.06, 37/183/0532.08, 37/183/0532.09, 37/183/0532.10, 37/183/0532.11, 37/183/0534.05, 37/183/0534.08, 37/183/0534.09, 37/183/0534.10, 37/183/0534.11, 37/183/0534.15, 37/183/0534.17, 37/183/0534.19, 37/183/0534.21, 37/183/0534.22, 37/183/0534.23, 37/183/0534.24, 37/183/0534.25, 37/183/0534.26, 37/183/0534.27, 37/183/0534.28, 37/183/0534.29, 37/183/0534.30, 37/183/0534.31, 37/183/0534.32, 37/183/0534.33, 37/183/0534.34, 37/183/0534.35, 37/183/0534.36, 37/183/0535.05, 37/183/0535.06, 37/183/0535.07, 37/183/0535.09, 37/183/0535.12, 37/183/0535.13, 37/183/0535.16, 37/183/0535.17, 37/183/0535.18, 37/183/0535.19, 37/183/0535.20, 37/183/0535.21, 37/183/0535.22, 37/183/0535.23, 37/183/0535.24, 37/183/0535.25, 37/183/0536.03, 37/183/0536.04, 37/183/0536.08, 37/183/0536.09, 37/183/0536.11, 37/183/0536.12, 37/183/0536.13, 37/183/0536.14, 37/183/0536.15, 37/183/0536.16, 37/183/0536.17, 37/183/0536.18, 37/183/0536.19, 37/183/0536.20, 37/183/0537.11, 37/183/0537.12, 37/183/0537.13, 37/183/0537.14, 37/183/0537.15, 37/183/0537.16, 37/183/0537.17, 37/183/0537.18, 37/183/0537.19, 37/183/0537.20, 37/183/0537.21, 37/183/0537.22, 37/183/0537.23, 37/183/0537.24, 37/183/0537.25, 37/183/0537.26, 37/183/0537.27, 37/183/0537.28, 37/183/0537.29, 37/183/0537.30, 37/183/0538.03, 37/183/0538.04, 37/183/0538.05, 37/183/0538.06, 37/183/0538.07, 37/183/0538.08, 37/183/0539.01, 37/183/0539.02, 37/183/0540.01, 37/183/0540.04, 37/183/0540.06, 37/183/0540.07, 37/183/0540.08, 37/183/0540.11, 37/183/0540.12, 37/183/0540.15, 37/183/0540.16, 37/183/0540.17, 37/183/0540.18, 37/183/0540.19, 37/183/0540.20, 37/183/0540.21, 37/183/0540.22, 37/183/0540.23, 37/183/0541.06, 37/183/0541.08, 37/183/0541.09, 37/183/0541.11, 37/183/0541.12, 37/183/0541.13, 37/183/0541.14, 37/183/0541.15, 37/183/0541.16, 37/183/0541.17, 37/183/0541.18, 37/183/0541.19, 37/183/0541.20, 37/183/0541.21, 37/183/0541.22, 37/183/0542.03, 37/183/0542.04, 37/183/0542.06, 37/183/0542.12, 37/183/0542.13, 37/183/0542.14, 37/183/0542.15, 37/183/0542.16, 37/183/0542.17, 37/183/0542.18, 37/183/0542.19, 37/183/0542.20, 37/183/0542.21, 37/183/0542.22, 37/183/0542.23, 37/183/0542.24, 37/183/0543.03, 37/183/0543.04, 37/183/0543.05, 37/183/0543.06, 37/183/0544.02, 37/183/0544.03, 37/183/0544.04, 37/183/0545.01, 37/183/0545.02, 37/183/9801.00, 37/183/9802.00



A map of MSA 11700 Asheville NC (partial)

Income as % of the MSA Median: Upper-Income (22), Middle-Income (52), Moderate-Income (19), Low-Income (1), All Others (1)

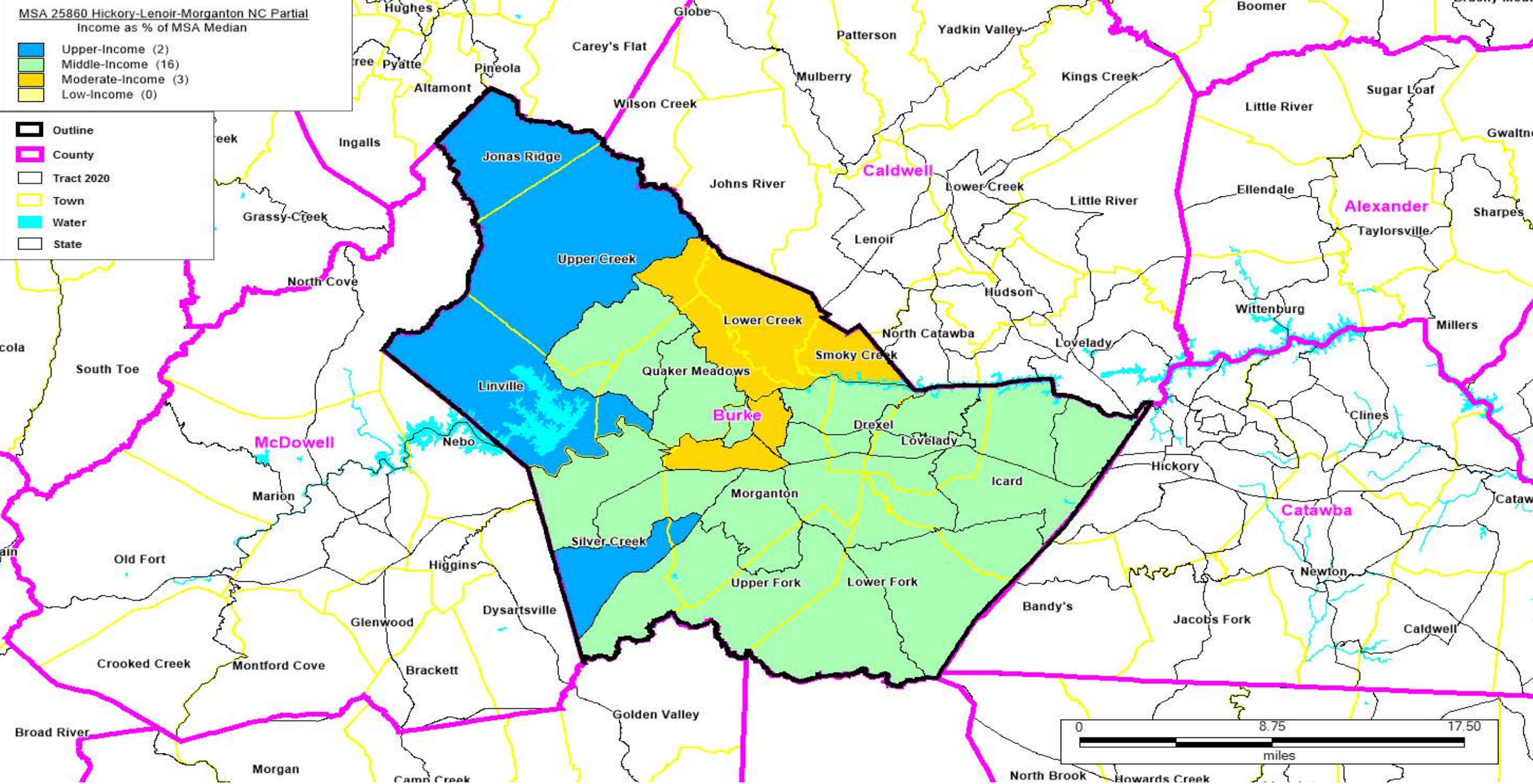
Outline - shown in a Black outline, County - shown in a pink outline, Tract 2020 - shown in a Black outline, Town - shown in a yellow outline, Water - shown in a blue outline, State - shown in a Black outline

NORTH CAROLINA

MSA 11700 Asheville NC (partial)

FORMAT: STATECODE/COUNTYCODE/TRACTCODE

37/021/0001.00, 37/021/0002.00, 37/021/0003.00, 37/021/0004.00, 37/021/0005.00, 37/021/0006.00, 37/021/0007.00, 37/021/0008.00, 37/021/0009.00, 37/021/0010.00, 37/021/0011.00, 37/021/0012.00, 37/021/0013.00, 37/021/0014.01, 37/021/0014.02, 37/021/0015.00, 37/021/0016.01, 37/021/0016.02, 37/021/0017.00, 37/021/0018.01, 37/021/0018.02, 37/021/0019.00, 37/021/0020.00, 37/021/0021.01, 37/021/0021.02, 37/021/0022.03, 37/021/0022.04, 37/021/0022.05, 37/021/0022.06, 37/021/0023.03, 37/021/0023.04, 37/021/0023.05, 37/021/0023.06, 37/021/0024.01, 37/021/0024.02, 37/021/0025.03, 37/021/0025.04, 37/021/0025.05, 37/021/0025.06, 37/021/0026.03, 37/021/0026.04, 37/021/0026.06, 37/021/0026.07, 37/021/0026.08, 37/021/0026.09, 37/021/0027.01, 37/021/0027.02, 37/021/0027.04, 37/021/0027.05, 37/021/0028.03, 37/021/0028.04, 37/021/0029.00, 37/021/0030.02, 37/021/0030.03, 37/021/0030.04, 37/021/0031.03, 37/021/0031.05, 37/021/0031.06, 37/021/0031.07, 37/021/0031.08, 37/021/0032.01, 37/021/0032.02, 37/021/0032.03, 37/021/0032.04, 37/021/0032.05, 37/089/9301.00, 37/089/9302.01, 37/089/9302.02, 37/089/9303.01, 37/089/9303.02, 37/089/9304.01, 37/089/9304.02, 37/089/9305.01, 37/089/9305.02, 37/089/9306.00, 37/089/9307.01, 37/089/9307.02, 37/089/9307.03, 37/089/9308.00, 37/089/9309.00, 37/089/9310.00, 37/089/9311.00, 37/089/9312.00, 37/089/9313.00, 37/089/9314.01, 37/089/9314.02, 37/089/9315.00, 37/089/9316.00, 37/089/9317.00, 37/089/9318.01, 37/089/9318.02, 37/089/9319.01, 37/089/9319.02, 37/089/9320.00, 37/089/9801.00



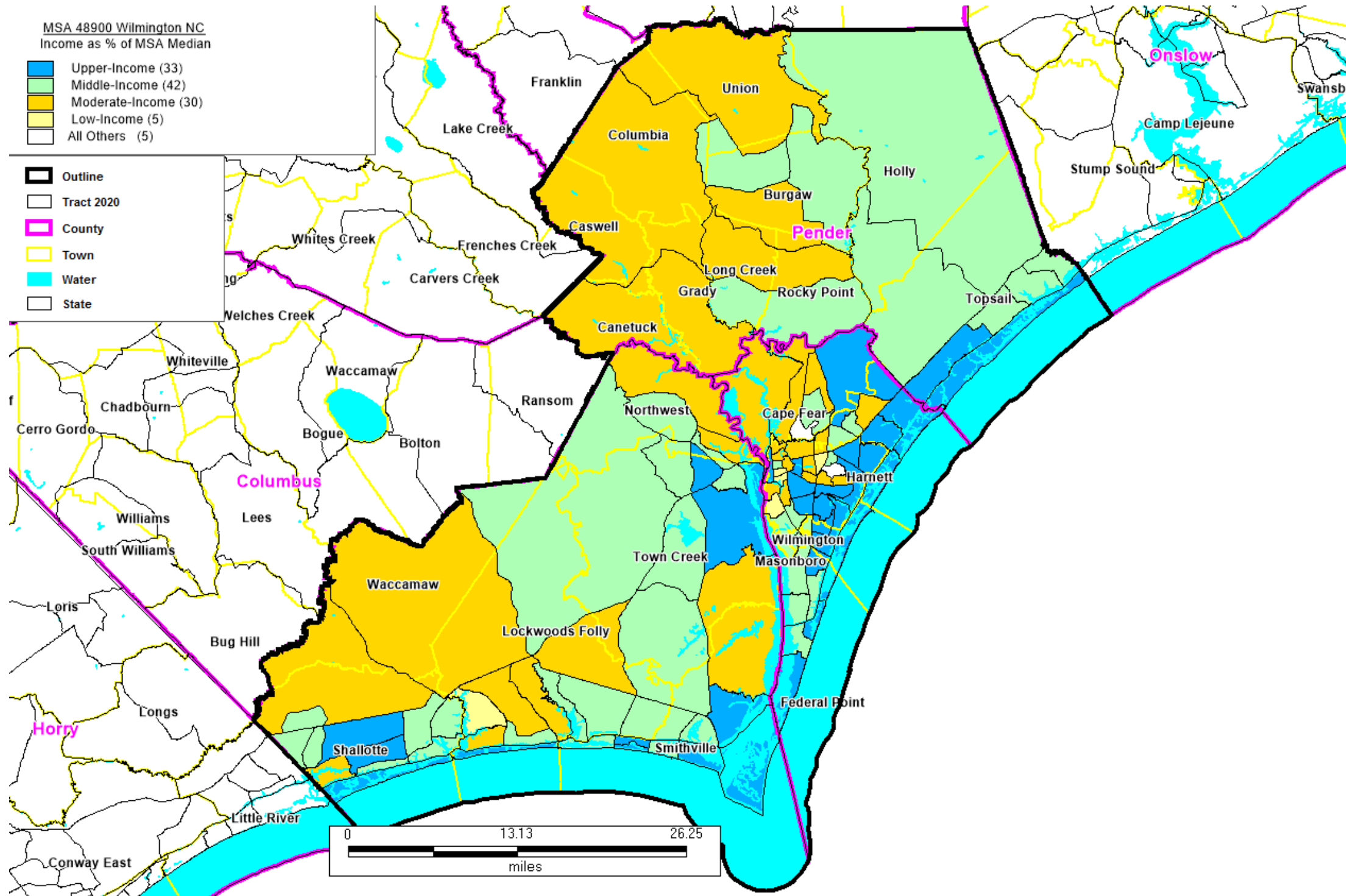
A map of MSA 25860 Hickory-Lenoir-Morganton NC (partial)
 Income as % of the MSA Median: Upper-Income (2), Middle-Income (16), Moderate-Income (3), Low-Income (0)
 Outline - shown in a Black outline, County - shown in a pink outline, Tract 2020 - shown in a Black outline, Town - shown in a yellow outline, Water - shown in a blue outline, State - shown in a Black outline

NORTH CAROLINA

MSA 25860 Hickory-Lenoir-Morganton NC (Partial)

FORMAT: STATECODE/COUNTYCODE/TRACTCODE

37/023/0201.00, 37/023/0202.02, 37/023/0202.03, 37/023/0202.04, 37/023/0203.01, 37/023/0203.03, 37/023/0203.04,
37/023/0205.00, 37/023/0206.00, 37/023/0208.01, 37/023/0208.02, 37/023/0209.01, 37/023/0209.02, 37/023/0210.00,
37/023/0211.00, 37/023/0212.01, 37/023/0212.02, 37/023/0212.03, 37/023/0213.01, 37/023/0213.02, 37/023/0214.00



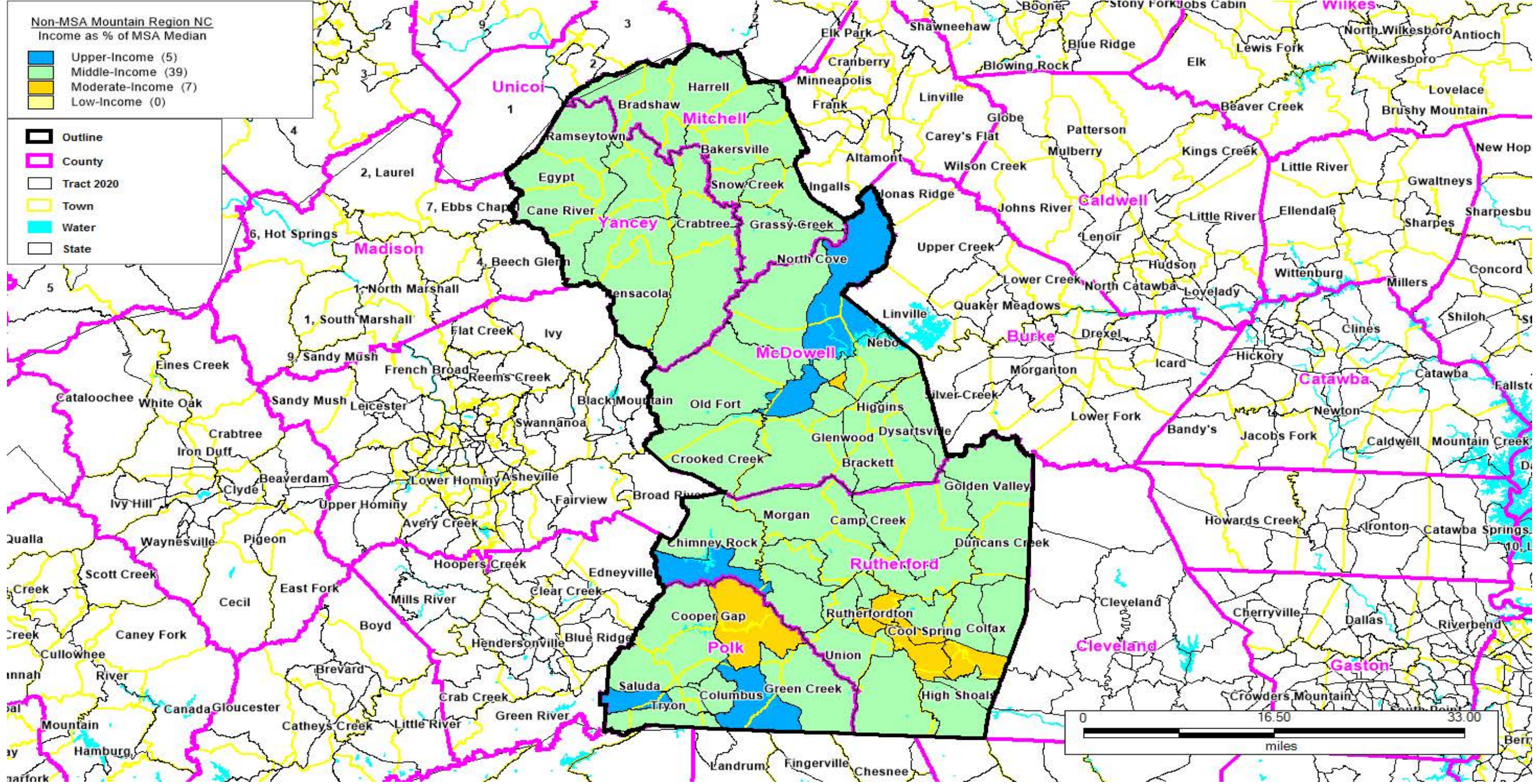
A map of MSA 48900 Wilmington NC
 Income as % of the MSA Median: Upper-Income (33), Middle-Income (42), Moderate-Income (30), Low-Income (5), All Others (5)
 Outline - shown in a Black outline, County - shown in a pink outline, Tract 2020 - shown in a Black outline, Town - shown in a yellow outline, Water - shown in a blue outline, State - shown in a Black outline

NORTH CAROLINA

MSA 48900 Wilmington NC

FORMAT: STATECODE/COUNTYCODE/TRACTCODE

37/019/0201.01, 37/019/0201.02, 37/019/0201.05, 37/019/0201.06, 37/019/0201.07, 37/019/0201.08, 37/019/0202.01, 37/019/0202.03, 37/019/0202.04, 37/019/0202.05, 37/019/0202.06, 37/019/0203.04, 37/019/0203.05, 37/019/0203.06, 37/019/0203.07, 37/019/0203.08, 37/019/0203.11, 37/019/0203.12, 37/019/0203.13, 37/019/0203.14, 37/019/0203.15, 37/019/0203.16, 37/019/0204.04, 37/019/0204.05, 37/019/0204.06, 37/019/0204.07, 37/019/0204.08, 37/019/0204.09, 37/019/0205.04, 37/019/0205.05, 37/019/0205.08, 37/019/0205.10, 37/019/0205.11, 37/019/0205.12, 37/019/0205.13, 37/019/0205.14, 37/019/0205.15, 37/019/0205.16, 37/019/0205.17, 37/019/0205.18, 37/019/0206.01, 37/019/0206.02, 37/019/0206.03, 37/019/9901.00, 37/129/0101.00, 37/129/0102.00, 37/129/0103.00, 37/129/0104.00, 37/129/0105.01, 37/129/0105.03, 37/129/0105.04, 37/129/0106.00, 37/129/0107.00, 37/129/0108.00, 37/129/0109.00, 37/129/0110.00, 37/129/0111.00, 37/129/0112.00, 37/129/0113.00, 37/129/0114.00, 37/129/0115.01, 37/129/0115.02, 37/129/0115.03, 37/129/0115.04, 37/129/0116.05, 37/129/0116.06, 37/129/0116.08, 37/129/0116.09, 37/129/0116.10, 37/129/0116.11, 37/129/0116.12, 37/129/0117.01, 37/129/0117.03, 37/129/0117.05, 37/129/0118.00, 37/129/0119.04, 37/129/0119.05, 37/129/0119.06, 37/129/0120.04, 37/129/0120.06, 37/129/0120.07, 37/129/0120.08, 37/129/0120.09, 37/129/0120.10, 37/129/0120.11, 37/129/0120.12, 37/129/0121.03, 37/129/0121.06, 37/129/0121.07, 37/129/0121.08, 37/129/0121.09, 37/129/0121.10, 37/129/0121.11, 37/129/0122.01, 37/129/0122.02, 37/129/0122.03, 37/129/0123.00, 37/129/9801.00, 37/129/9901.00, 37/141/9201.04, 37/141/9201.05, 37/141/9201.06, 37/141/9202.01, 37/141/9202.02, 37/141/9202.03, 37/141/9202.04, 37/141/9203.00, 37/141/9204.01, 37/141/9204.02, 37/141/9204.03, 37/141/9205.01, 37/141/9205.02, 37/141/9206.01, 37/141/9206.02, 37/141/9901.00



A map of Non-MSA Mountain Region NC
 Income as % of the MSA Median: Upper-Income (5), Middle-Income (39), Moderate-Income (7), Low-Income (0)
 Outline - shown in a Black outline, County - shown in a pink outline, Tract 2020 - shown in a Black outline, Town - shown in a yellow outline, Water - shown in a blue outline, State - shown in a Black outline

NORTH CAROLINA

Non-MSA Mountain Region NC

FORMAT: STATECODE/COUNTYCODE/TRACTCODE

37/111/9701.01, 37/111/9701.02, 37/111/9702.00, 37/111/9703.00, 37/111/9704.00, 37/111/9705.00, 37/111/9706.00,
37/111/9707.00, 37/111/9708.00, 37/111/9709.02, 37/111/9709.03, 37/111/9709.04, 37/121/9501.00, 37/121/9502.00,
37/121/9503.00, 37/121/9504.00, 37/149/9201.01, 37/149/9201.03, 37/149/9201.04, 37/149/9202.01, 37/149/9202.02,
37/149/9203.01, 37/149/9203.03, 37/149/9203.04, 37/161/9601.01, 37/161/9601.02, 37/161/9601.03, 37/161/9602.01,
37/161/9602.02, 37/161/9602.03, 37/161/9603.01, 37/161/9603.02, 37/161/9604.00, 37/161/9605.01, 37/161/9605.02,
37/161/9605.03, 37/161/9606.00, 37/161/9607.00, 37/161/9608.00, 37/161/9609.00, 37/161/9610.01, 37/161/9610.02,
37/161/9611.02, 37/161/9611.03, 37/161/9611.04, 37/161/9612.00, 37/199/9601.01, 37/199/9601.02, 37/199/9602.00,
37/199/9603.00, 37/199/9604.00