

A map of MSA 15980 Cape Coral-Fort Myers FL

Income as % of the MSA Median: Upper-Income (66), Middle-Income (99), Moderate-Income (48), Low-Income (5), All Others (5)

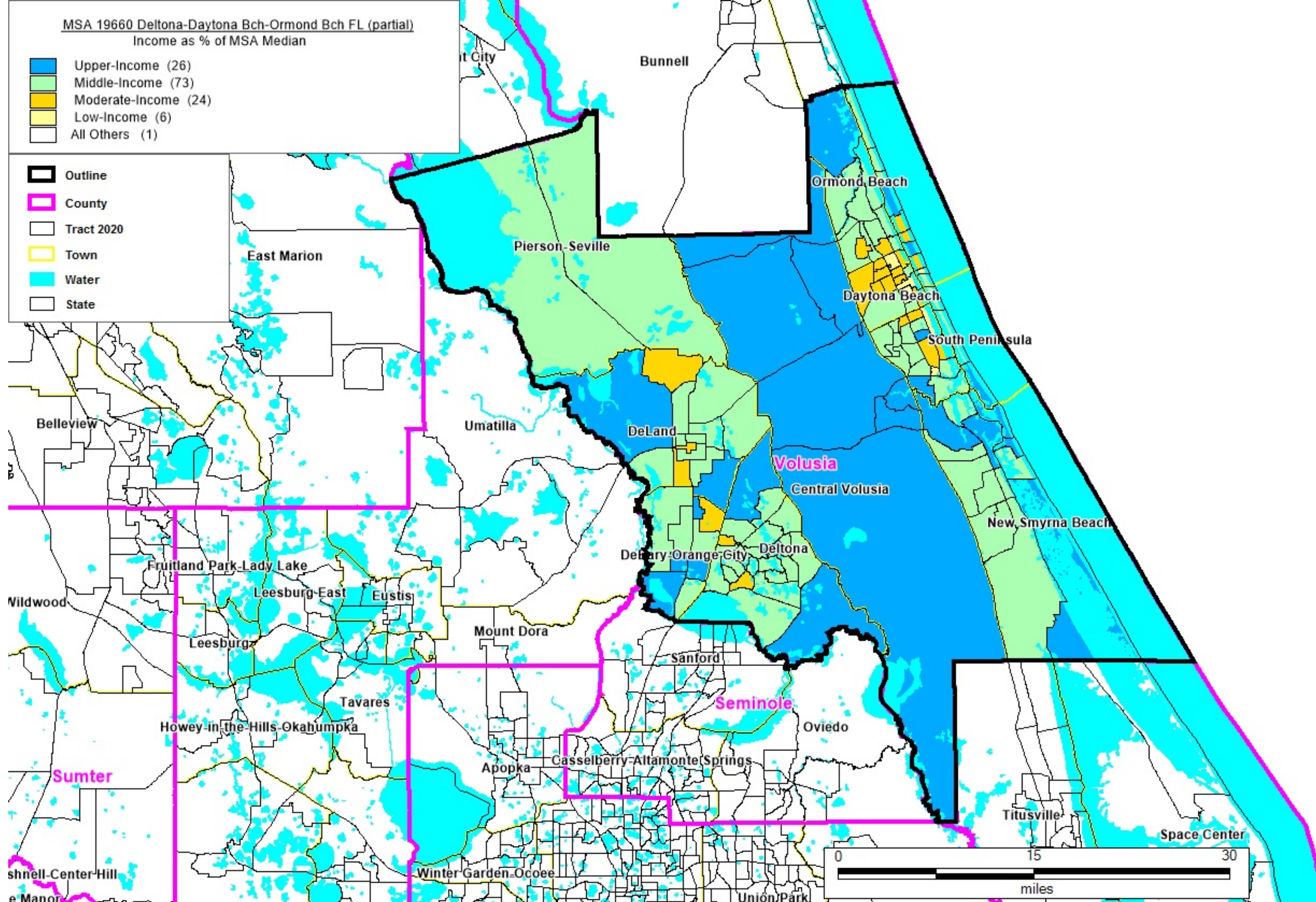
Outline - shown in a Black outline, County - shown in a pink outline, Tract 2020 - shown in a Black outline, Town - shown in a yellow outline, Water - shown in a blue outline, State - shown in a Black outline

FLORIDA

MSA 15980 Cape Coral-Fort Myers FL

FORMAT: STATECODE/COUNTYCODE/TRACTCODE

12/071/0003.03, 12/071/0003.04, 12/071/0003.05, 12/071/0003.06, 12/071/0004.01, 12/071/0004.02, 12/071/0005.02, 12/071/0005.03, 12/071/0005.04, 12/071/0006.00, 12/071/0007.00, 12/071/0008.00, 12/071/0009.00, 12/071/0010.01, 12/071/0010.02, 12/071/0011.01, 12/071/0011.03, 12/071/0011.04, 12/071/0012.03, 12/071/0012.04, 12/071/0012.05, 12/071/0012.06, 12/071/0012.07, 12/071/0012.08, 12/071/0012.09, 12/071/0013.00, 12/071/0014.01, 12/071/0014.02, 12/071/0015.01, 12/071/0015.02, 12/071/0016.01, 12/071/0016.02, 12/071/0017.01, 12/071/0017.05, 12/071/0017.06, 12/071/0017.08, 12/071/0017.09, 12/071/0017.10, 12/071/0017.11, 12/071/0018.01, 12/071/0018.02, 12/071/0019.03, 12/071/0019.08, 12/071/0019.10, 12/071/0019.11, 12/071/0019.12, 12/071/0019.13, 12/071/0019.15, 12/071/0019.16, 12/071/0019.17, 12/071/0019.18, 12/071/0019.19, 12/071/0019.20, 12/071/0019.21, 12/071/0019.22, 12/071/0019.23, 12/071/0101.04, 12/071/0101.06, 12/071/0101.07, 12/071/0101.08, 12/071/0101.09, 12/071/0101.10, 12/071/0101.11, 12/071/0101.12, 12/071/0101.13, 12/071/0102.03, 12/071/0102.05, 12/071/0102.06, 12/071/0102.07, 12/071/0102.08, 12/071/0102.09, 12/071/0102.10, 12/071/0103.02, 12/071/0103.03, 12/071/0103.05, 12/071/0103.06, 12/071/0103.07, 12/071/0103.08, 12/071/0103.09, 12/071/0104.04, 12/071/0104.11, 12/071/0104.12, 12/071/0104.13, 12/071/0104.14, 12/071/0104.15, 12/071/0104.16, 12/071/0104.17, 12/071/0104.18, 12/071/0104.19, 12/071/0104.20, 12/071/0104.21, 12/071/0104.22, 12/071/0104.23, 12/071/0105.01, 12/071/0105.03, 12/071/0105.04, 12/071/0106.01, 12/071/0106.02, 12/071/0107.01, 12/071/0107.02, 12/071/0108.01, 12/071/0108.02, 12/071/0108.03, 12/071/0201.02, 12/071/0201.03, 12/071/0201.04, 12/071/0202.01, 12/071/0202.02, 12/071/0203.01, 12/071/0203.02, 12/071/0204.00, 12/071/0205.01, 12/071/0205.02, 12/071/0206.00, 12/071/0207.00, 12/071/0208.01, 12/071/0208.02, 12/071/0301.00, 12/071/0302.01, 12/071/0302.02, 12/071/0302.05, 12/071/0303.00, 12/071/0401.08, 12/071/0401.09, 12/071/0401.10, 12/071/0401.11, 12/071/0401.13, 12/071/0401.17, 12/071/0401.18, 12/071/0401.20, 12/071/0401.21, 12/071/0401.22, 12/071/0401.23, 12/071/0401.24, 12/071/0401.25, 12/071/0401.26, 12/071/0401.27, 12/071/0401.28, 12/071/0401.29, 12/071/0401.30, 12/071/0401.31, 12/071/0401.32, 12/071/0401.33, 12/071/0401.34, 12/071/0401.35, 12/071/0401.36, 12/071/0401.37, 12/071/0401.38, 12/071/0401.39, 12/071/0402.05, 12/071/0402.06, 12/071/0402.07, 12/071/0402.08, 12/071/0402.09, 12/071/0402.10, 12/071/0402.11, 12/071/0402.12, 12/071/0403.01, 12/071/0403.02, 12/071/0403.03, 12/071/0403.04, 12/071/0403.05, 12/071/0403.08, 12/071/0403.10, 12/071/0403.11, 12/071/0403.12, 12/071/0403.13, 12/071/0403.14, 12/071/0403.15, 12/071/0403.16, 12/071/0501.03, 12/071/0501.04, 12/071/0501.05, 12/071/0501.06, 12/071/0502.04, 12/071/0502.05, 12/071/0502.06, 12/071/0502.07, 12/071/0502.08, 12/071/0502.10, 12/071/0502.11, 12/071/0502.12, 12/071/0502.13, 12/071/0503.05, 12/071/0503.06, 12/071/0503.11, 12/071/0503.12, 12/071/0503.15, 12/071/0503.16, 12/071/0503.17, 12/071/0503.18, 12/071/0503.19, 12/071/0503.20, 12/071/0503.21, 12/071/0503.22, 12/071/0503.23, 12/071/0503.24, 12/071/0503.25, 12/071/0504.01, 12/071/0504.02, 12/071/0505.01, 12/071/0505.02, 12/071/0506.01, 12/071/0506.03, 12/071/0506.04, 12/071/0601.01, 12/071/0601.02, 12/071/0602.01, 12/071/0602.02, 12/071/0602.03, 12/071/0603.00, 12/071/0701.01, 12/071/0701.02, 12/071/0702.01, 12/071/0702.02, 12/071/0801.00, 12/071/0802.02, 12/071/0802.03, 12/071/0802.04, 12/071/0803.00, 12/071/0901.00, 12/071/9800.00, 12/071/9900.00



A map of MSA 19660 Deltona-Daytona Beach-Ormond Beach FL (partial)

Income as % of the MSA Median: Upper-Income (26), Middle-Income (73), Moderate-Income (24), Low-Income (6), All Others (1)

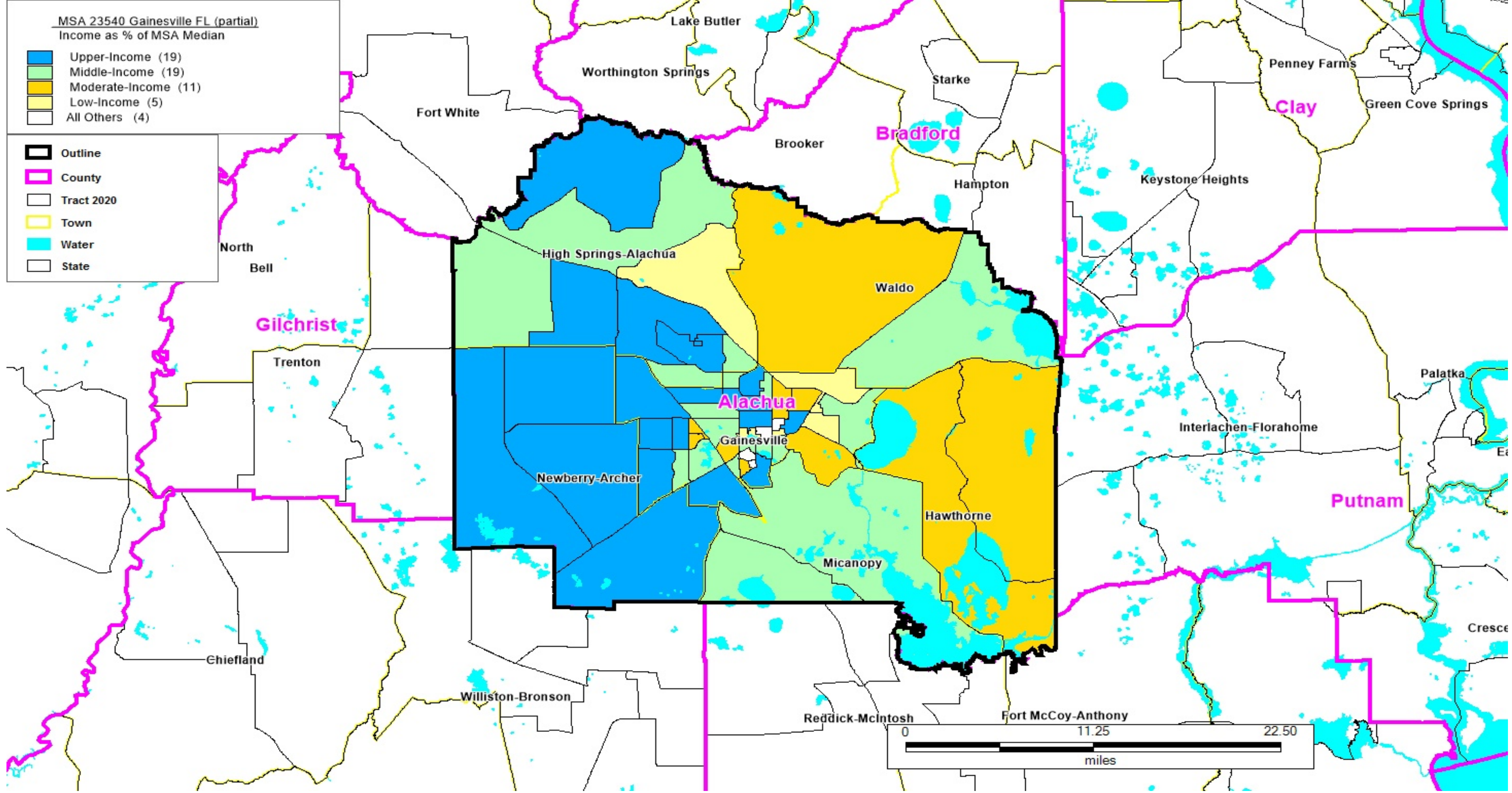
Outline - shown in a Black outline, County - shown in a pink outline, Tract 2020 - shown in a Black outline, Town - shown in a yellow outline, Water - shown in a blue outline, State - shown in a Black outline

FLORIDA

MSA 19660 Deltona-Daytona Bch-Ormond Bch FL (Partial)

FORMAT: STATECODE/COUNTYCODE/TRACTCODE

12/127/0801.01, 12/127/0801.02, 12/127/0802.01, 12/127/0802.02, 12/127/0803.00, 12/127/0804.00, 12/127/0805.00,
12/127/0806.00, 12/127/0807.00, 12/127/0808.03, 12/127/0808.05, 12/127/0808.06, 12/127/0808.07, 12/127/0808.08,
12/127/0808.09, 12/127/0809.01, 12/127/0809.02, 12/127/0810.01, 12/127/0810.02, 12/127/0811.01, 12/127/0811.02,
12/127/0812.01, 12/127/0812.02, 12/127/0813.00, 12/127/0815.00, 12/127/0816.00, 12/127/0817.01, 12/127/0817.02,
12/127/0818.00, 12/127/0819.00, 12/127/0820.00, 12/127/0821.00, 12/127/0822.01, 12/127/0822.02, 12/127/0823.02,
12/127/0823.03, 12/127/0824.01, 12/127/0824.04, 12/127/0824.05, 12/127/0824.06, 12/127/0824.10, 12/127/0824.11,
12/127/0824.12, 12/127/0824.13, 12/127/0824.14, 12/127/0824.15, 12/127/0825.03, 12/127/0825.06, 12/127/0825.08,
12/127/0825.09, 12/127/0825.10, 12/127/0825.11, 12/127/0825.12, 12/127/0825.13, 12/127/0826.04, 12/127/0826.05,
12/127/0826.06, 12/127/0826.07, 12/127/0827.01, 12/127/0827.03, 12/127/0827.04, 12/127/0827.05, 12/127/0828.01,
12/127/0828.02, 12/127/0829.02, 12/127/0829.03, 12/127/0829.04, 12/127/0830.03, 12/127/0830.05, 12/127/0830.06,
12/127/0830.07, 12/127/0830.08, 12/127/0830.09, 12/127/0832.03, 12/127/0832.05, 12/127/0832.06, 12/127/0832.07
12/127/0832.09, 12/127/0832.10, 12/127/0832.11, 12/127/0901.01, 12/127/0901.02, 12/127/0902.02, 12/127/0902.03,
12/127/0902.04, 12/127/0903.03, 12/127/0903.04, 12/127/0903.05, 12/127/0903.06, 12/127/0903.07, 12/127/0904.01,
12/127/0904.02, 12/127/0905.00, 12/127/0906.00, 12/127/0907.01, 12/127/0907.02, 12/127/0908.03, 12/127/0908.04,
12/127/0908.06, 12/127/0908.07, 12/127/0908.08, 12/127/0909.03, 12/127/0909.04, 12/127/0909.05, 12/127/0909.06,
12/127/0910.01, 12/127/0910.05, 12/127/0910.15, 12/127/0910.16, 12/127/0910.17, 12/127/0910.18, 12/127/0910.19,
12/127/0910.20, 12/127/0910.21, 12/127/0910.23, 12/127/0910.25, 12/127/0910.28, 12/127/0910.29, 12/127/0910.30,
12/127/0910.31, 12/127/0910.32, 12/127/0910.33, 12/127/0910.34, 12/127/0910.35, 12/127/0910.36, 12/127/0910.37,
12/127/0910.38, 12/127/0910.39, 12/127/0925.00, 12/127/9900.00



A map of MSA 23540 Gainesville FL (partial)

Income as % of the MSA Median: Upper-Income (19), Middle-Income (19), Moderate-Income (11), Low-Income (5), All Others (4)

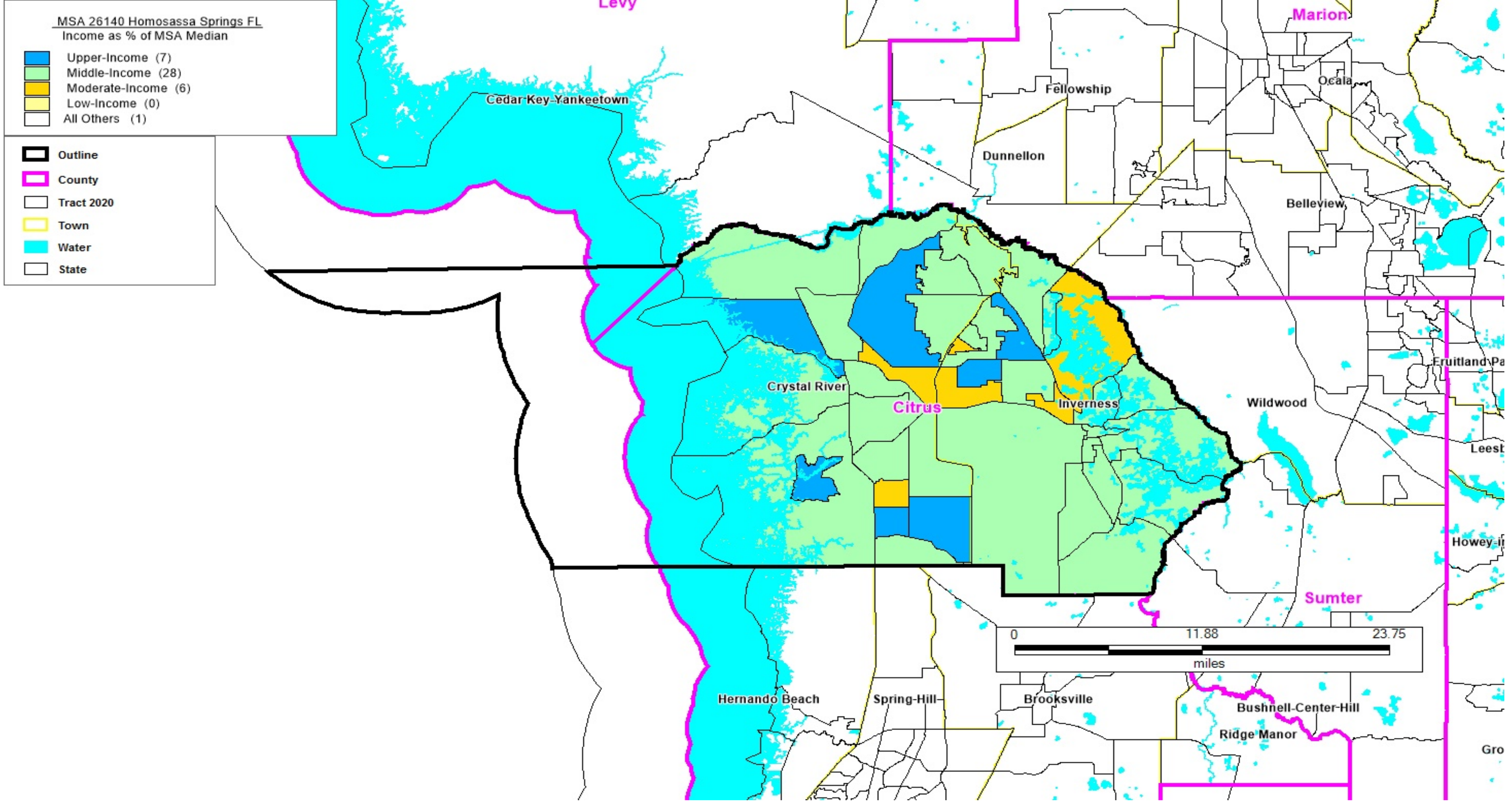
Outline - shown in a Black outline, County - shown in a pink outline, Tract 2020 - shown in a Black outline, Town - shown in a yellow outline, Water - shown in a blue outline, State - shown in a Black outline

FLORIDA

MSA 23540 Gainesville FL (Partial)

FORMAT: STATECODE/COUNTYCODE/TRACTCODE

12/001/0002.01, 12/001/0002.02, 12/001/0003.01, 12/001/0003.02, 12/001/0004.00, 12/001/0005.00, 12/001/0006.00,
12/001/0007.00, 12/001/0008.06, 12/001/0008.08, 12/001/0008.09, 12/001/0009.01, 12/001/0009.02, 12/001/0010.00,
12/001/0011.00, 12/001/0012.01, 12/001/0012.02, 12/001/0012.03, 12/001/0014.00, 12/001/0015.14, 12/001/0015.15,
12/001/0015.16, 12/001/0015.17, 12/001/0015.19, 12/001/0015.22, 12/001/0016.05, 12/001/0017.01, 12/001/0017.02,
12/001/0018.02, 12/001/0018.03, 12/001/0018.11, 12/001/0018.13, 12/001/0018.15, 12/001/0018.16, 12/001/0018.17,
12/001/0018.18, 12/001/0018.19, 12/001/0019.02, 12/001/0019.07, 12/001/0019.08, 12/001/0020.01, 12/001/0020.02,
12/001/0021.01, 12/001/0021.02, 12/001/0022.01, 12/001/0022.02, 12/001/0022.04, 12/001/0022.07, 12/001/0022.08,
12/001/0022.09, 12/001/0022.10, 12/001/0022.17, 12/001/0022.18, 12/001/0022.19, 12/001/0022.20, 12/001/0022.21,
12/001/0022.22, 12/001/1108.00



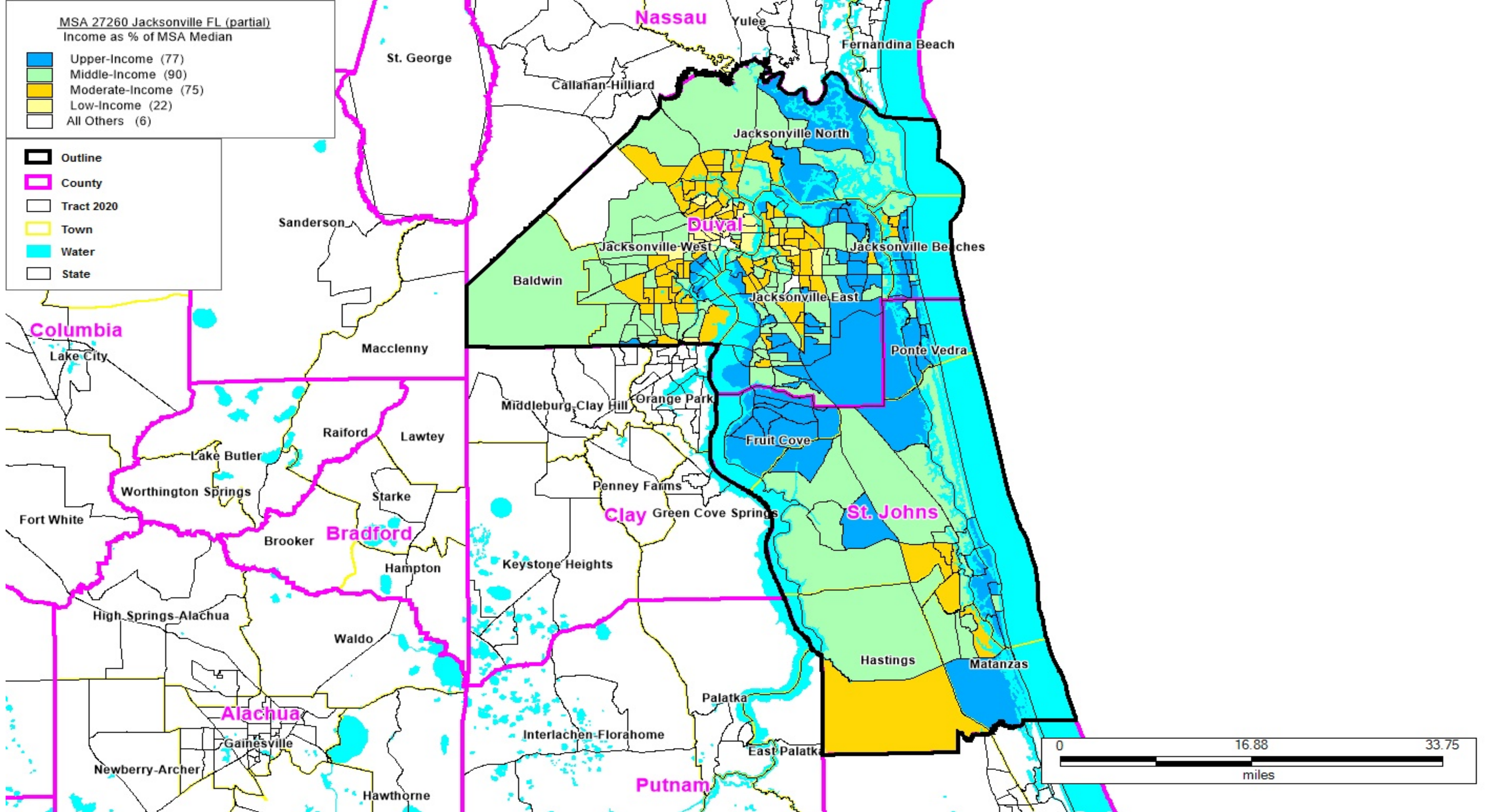
A map of MSA 26140 Homosassa Springs FL
Income as % of the MSA Median: Upper-Income (7), Middle-Income (28), Moderate-Income (6), Low-Income (0), All Others (1)
Outline - shown in a Black outline, County - shown in a pink outline, Tract 2020 - shown in a Black outline, Town - shown in a yellow outline, Water - shown in a blue outline, State - shown in a Black outline

FLORIDA

MSA 26140 Homosassa Springs FL

FORMAT: STATECODE/COUNTYCODE/TRACTCODE

12/017/4501.03, 12/017/4501.04, 12/017/4501.05, 12/017/4501.06, 12/017/4502.01, 12/017/4502.02, 12/017/4503.05,
12/017/4503.06, 12/017/4503.07, 12/017/4503.08, 12/017/4503.09, 12/017/4503.10, 12/017/4504.01, 12/017/4504.02,
12/017/4505.01, 12/017/4505.02, 12/017/4506.01, 12/017/4506.02, 12/017/4507.03, 12/017/4507.04, 12/017/4507.05,
12/017/4507.06, 12/017/4508.00, 12/017/4509.01, 12/017/4509.02, 12/017/4510.01, 12/017/4510.02, 12/017/4511.01,
12/017/4511.03, 12/017/4511.04, 12/017/4512.00, 12/017/4513.00, 12/017/4514.00, 12/017/4515.01, 12/017/4515.02,
12/017/4516.03, 12/017/4516.04, 12/017/4516.05, 12/017/4516.06, 12/017/4517.01, 12/017/4517.02, 12/017/9900.00



A map of MSA 27260 Jacksonville FL (partial)

Income as % of the MSA Median: Upper-Income (77), Middle-Income (90), Moderate-Income (75), Low-Income (22), All Others (6)

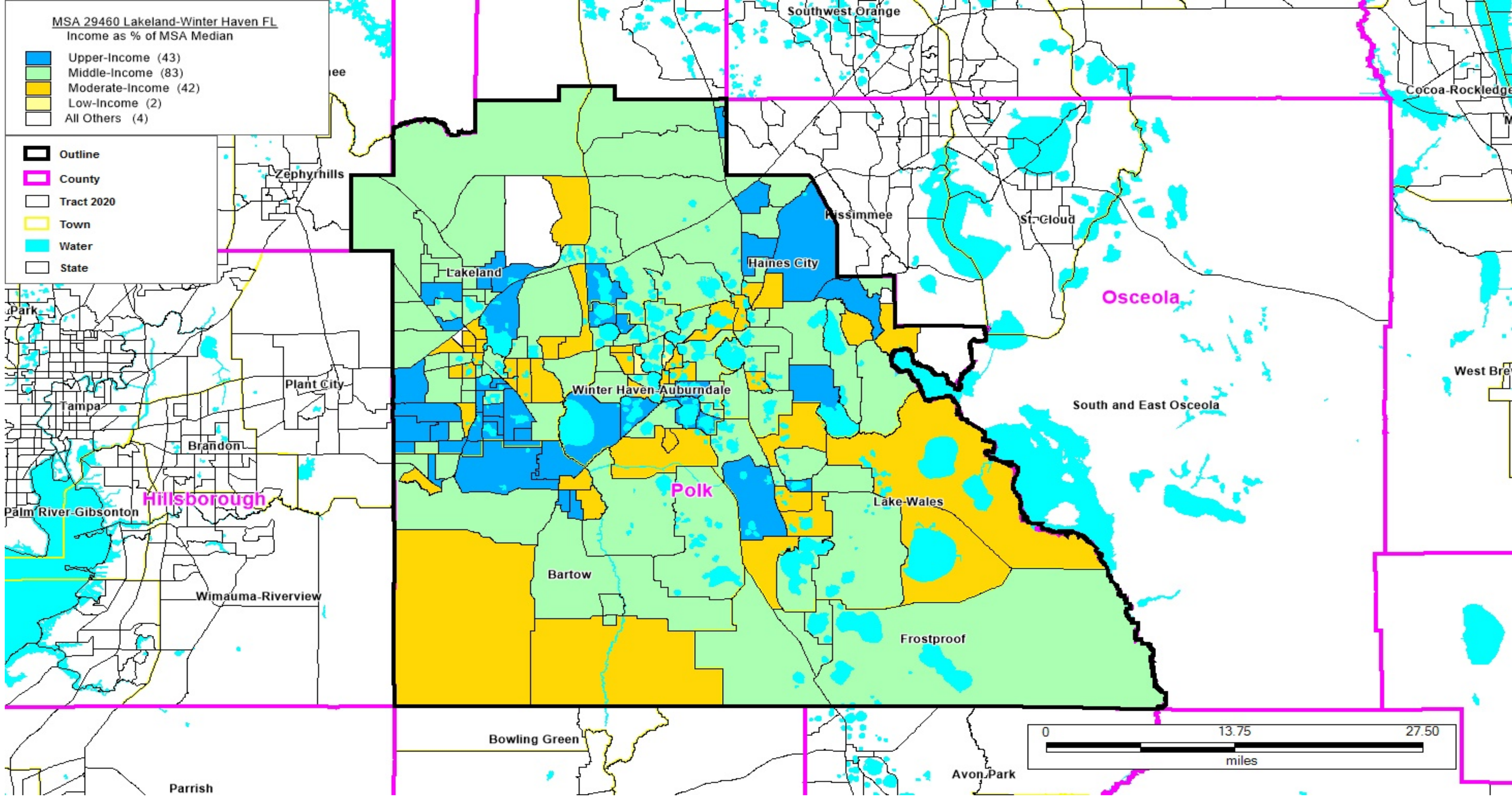
Outline - shown in a Black outline, County - shown in a pink outline, Tract 2020 - shown in a Black outline, Town - shown in a yellow outline, Water - shown in a blue outline, State - shown in a Black outline

FLORIDA

MSA 27260 Jacksonville FL (Partial)

FORMAT: STATECODE/COUNTYCODE/TRACTCODE

12/031/0001.01, 12/031/0001.02, 12/031/0002.00, 12/031/0003.00, 12/031/0006.00, 12/031/0007.00, 12/031/0008.00, 12/031/0010.00, 12/031/0011.00, 12/031/0012.00, 12/031/0013.00, 12/031/0014.01, 12/031/0014.02, 12/031/0015.00, 12/031/0016.00, 12/031/0021.01, 12/031/0021.02, 12/031/0022.00, 12/031/0023.00, 12/031/0024.00, 12/031/0025.01, 12/031/0025.02, 12/031/0026.00, 12/031/0027.01, 12/031/0027.02, 12/031/0028.01, 12/031/0028.02, 12/031/0029.01, 12/031/0029.02, 12/031/0101.01, 12/031/0101.04, 12/031/0101.05, 12/031/0101.06, 12/031/0101.07, 12/031/0102.02, 12/031/0102.03, 12/031/0102.04, 12/031/0103.01, 12/031/0103.05, 12/031/0103.06, 12/031/0103.07, 12/031/0103.08, 12/031/0104.01, 12/031/0104.02, 12/031/0105.01, 12/031/0105.02, 12/031/0105.03, 12/031/0106.01, 12/031/0106.02, 12/031/0107.00, 12/031/0108.00, 12/031/0109.00, 12/031/0110.00, 12/031/0111.00, 12/031/0112.00, 12/031/0113.00, 12/031/0114.00, 12/031/0115.00, 12/031/0116.00, 12/031/0117.00, 12/031/0118.00, 12/031/0119.01, 12/031/0119.03, 12/031/0119.04, 12/031/0119.05, 12/031/0120.00, 12/031/0121.00, 12/031/0122.01, 12/031/0122.02, 12/031/0123.00, 12/031/0124.00, 12/031/0125.00, 12/031/0126.01, 12/031/0126.02, 12/031/0127.02, 12/031/0127.03, 12/031/0127.04, 12/031/0128.00, 12/031/0129.00, 12/031/0130.00, 12/031/0131.00, 12/031/0132.00, 12/031/0133.01, 12/031/0133.02, 12/031/0134.02, 12/031/0134.03, 12/031/0134.04, 12/031/0135.02, 12/031/0135.04, 12/031/0135.22, 12/031/0135.23, 12/031/0135.24, 12/031/0135.25, 12/031/0135.26, 12/031/0137.23, 12/031/0137.28, 12/031/0137.29, 12/031/0137.30, 12/031/0137.31, 12/031/0137.32, 12/031/0137.33, 12/031/0138.00, 12/031/0139.01, 12/031/0139.02, 12/031/0139.04, 12/031/0139.05, 12/031/0139.06, 12/031/0140.01, 12/031/0140.02, 12/031/0141.01, 12/031/0141.03, 12/031/0141.04, 12/031/0142.03, 12/031/0142.04, 12/031/0142.05, 12/031/0142.06, 12/031/0143.11, 12/031/0143.12, 12/031/0143.28, 12/031/0143.29, 12/031/0143.30, 12/031/0143.31, 12/031/0143.33, 12/031/0143.34, 12/031/0143.35, 12/031/0143.36, 12/031/0143.38, 12/031/0143.39, 12/031/0143.40, 12/031/0143.41, 12/031/0143.42, 12/031/0143.43, 12/031/0143.44, 12/031/0144.08, 12/031/0144.13, 12/031/0144.14, 12/031/0144.15, 12/031/0144.16, 12/031/0144.17, 12/031/0144.18, 12/031/0144.19, 12/031/0144.20, 12/031/0144.21, 12/031/0144.22, 12/031/0144.23, 12/031/0144.24, 12/031/0144.25, 12/031/0144.26, 12/031/0144.27, 12/031/0144.28, 12/031/0145.00, 12/031/0146.01, 12/031/0146.03, 12/031/0146.04, 12/031/0147.02, 12/031/0147.03, 12/031/0147.04, 12/031/0148.00, 12/031/0149.01, 12/031/0149.02, 12/031/0150.01, 12/031/0150.02, 12/031/0151.00, 12/031/0152.00, 12/031/0153.00, 12/031/0154.00, 12/031/0155.01, 12/031/0155.02, 12/031/0156.00, 12/031/0157.01, 12/031/0157.02, 12/031/0158.03, 12/031/0158.04, 12/031/0158.05, 12/031/0158.06, 12/031/0159.22, 12/031/0159.24, 12/031/0159.25, 12/031/0159.26, 12/031/0159.27, 12/031/0159.28, 12/031/0159.29, 12/031/0160.01, 12/031/0160.02, 12/031/0161.01, 12/031/0161.02, 12/031/0162.00, 12/031/0163.00, 12/031/0164.00, 12/031/0165.00, 12/031/0166.03, 12/031/0166.04, 12/031/0166.05, 12/031/0166.06, 12/031/0167.11, 12/031/0167.24, 12/031/0167.25, 12/031/0167.26, 12/031/0167.27, 12/031/0167.28, 12/031/0167.29, 12/031/0167.30, 12/031/0167.31, 12/031/0168.01, 12/031/0168.03, 12/031/0168.04, 12/031/0168.07, 12/031/0168.08, 12/031/0168.09, 12/031/0168.10, 12/031/0168.11, 12/031/0168.12, 12/031/0168.13, 12/031/0171.01, 12/031/0171.02, 12/031/0172.00, 12/031/0173.00, 12/031/0174.00, 12/031/9900.00, 12/109/0202.00, 12/109/0203.00, 12/109/0204.00, 12/109/0205.00, 12/109/0206.03, 12/109/0206.04, 12/109/0206.05, 12/109/0206.06, 12/109/0207.04, 12/109/0207.05, 12/109/0207.06, 12/109/0207.07, 12/109/0207.08, 12/109/0207.10, 12/109/0207.12, 12/109/0207.13, 12/109/0208.01, 12/109/0208.02, 12/109/0208.03, 12/109/0208.04, 12/109/0208.07, 12/109/0208.08, 12/109/0208.09, 12/109/0208.10, 12/109/0208.11, 12/109/0209.03, 12/109/0209.04, 12/109/0209.05, 12/109/0209.06, 12/109/0209.07, 12/109/0209.08, 12/109/0210.02, 12/109/0210.03, 12/109/0210.04, 12/109/0211.01, 12/109/0211.02, 12/109/0211.03, 12/109/0212.07, 12/109/0212.08, 12/109/0212.09, 12/109/0212.10, 12/109/0212.11, 12/109/0213.01, 12/109/0213.02, 12/109/0214.03, 12/109/0214.04, 12/109/0214.08, 12/109/0214.09, 12/109/0214.10, 12/109/9901.00, 12/109/9902.00



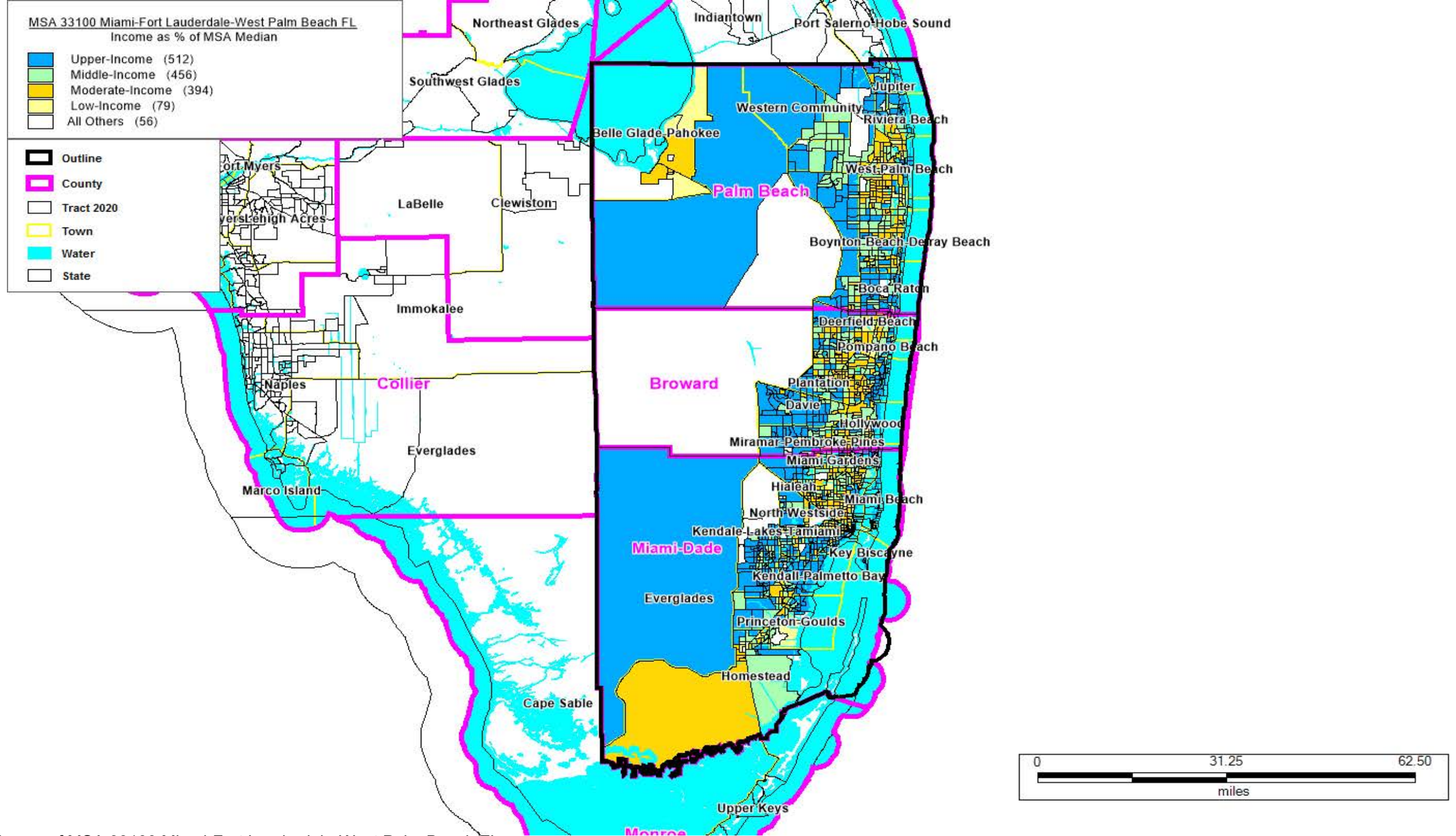
A map of MSA 29460 Lakeland-Winter Haven FL
Income as % of the MSA Median: Upper-Income (43), Middle-Income (83), Moderate-Income (42), Low-Income (2), All Others (4)
Outline - shown in a Black outline, County - shown in a pink outline, Tract 2020 - shown in a Black outline, Town - shown in a yellow outline, Water - shown in a blue outline, State - shown in a Black outline

FLORIDA

MSA 29460 Lakeland-Winter Haven FL

FORMAT: STATECODE/COUNTYCODE/TRACTCODE

12/105/0103.00, 12/105/0104.01, 12/105/0104.02, 12/105/0105.01, 12/105/0105.02, 12/105/0106.01, 12/105/0106.03,
12/105/0106.04, 12/105/0107.01, 12/105/0107.02, 12/105/0108.00, 12/105/0109.00, 12/105/0110.00, 12/105/0111.00,
12/105/0112.02, 12/105/0112.03, 12/105/0112.04, 12/105/0113.00, 12/105/0114.00, 12/105/0115.01, 12/105/0115.02,
12/105/0116.03, 12/105/0116.04, 12/105/0116.05, 12/105/0116.06, 12/105/0117.04, 12/105/0117.21, 12/105/0117.22,
12/105/0117.31, 12/105/0117.32, 12/105/0118.21, 12/105/0118.22, 12/105/0118.32, 12/105/0118.34, 12/105/0118.35,
12/105/0118.36, 12/105/0118.37, 12/105/0118.38, 12/105/0119.01, 12/105/0119.02, 12/105/0119.08, 12/105/0119.09,
12/105/0119.10, 12/105/0119.11, 12/105/0119.12, 12/105/0119.13, 12/105/0120.01, 12/105/0120.02, 12/105/0120.03,
12/105/0120.04, 12/105/0121.13, 12/105/0121.24, 12/105/0121.25, 12/105/0121.26, 12/105/0121.27, 12/105/0121.28,
12/105/0121.30, 12/105/0121.31, 12/105/0121.32, 12/105/0121.33, 12/105/0122.03, 12/105/0122.07, 12/105/0122.08,
12/105/0122.09, 12/105/0123.03, 12/105/0123.04, 12/105/0123.05, 12/105/0123.06, 12/105/0123.07, 12/105/0123.09,
12/105/0124.04, 12/105/0124.05, 12/105/0124.07, 12/105/0124.08, 12/105/0124.09, 12/105/0124.10, 12/105/0124.11
12/105/0124.12, 12/105/0124.13, 12/105/0124.14, 12/105/0124.15, 12/105/0125.02, 12/105/0125.06, 12/105/0125.08,
12/105/0125.09, 12/105/0125.10, 12/105/0125.11, 12/105/0125.12, 12/105/0125.13, 12/105/0125.14, 12/105/0125.15,
12/105/0126.01, 12/105/0126.02, 12/105/0127.01, 12/105/0127.02, 12/105/0128.02, 12/105/0128.03, 12/105/0128.04,
12/105/0129.00, 12/105/0130.01, 12/105/0130.02, 12/105/0131.01, 12/105/0131.02, 12/105/0131.03, 12/105/0132.00,
12/105/0133.00, 12/105/0134.00, 12/105/0135.00, 12/105/0136.01, 12/105/0136.02, 12/105/0137.01, 12/105/0137.02,
12/105/0138.01, 12/105/0138.02, 12/105/0139.01, 12/105/0139.02, 12/105/0140.01, 12/105/0140.03, 12/105/0140.05,
12/105/0140.06, 12/105/0141.04, 12/105/0141.21, 12/105/0141.23, 12/105/0141.24, 12/105/0141.26, 12/105/0141.27,
12/105/0141.28, 12/105/0141.29, 12/105/0141.30, 12/105/0141.31, 12/105/0142.01, 12/105/0142.02, 12/105/0142.03,
12/105/0143.01, 12/105/0143.03, 12/105/0143.04, 12/105/0144.01, 12/105/0144.02, 12/105/0145.01, 12/105/0145.02,
12/105/0146.00, 12/105/0147.01, 12/105/0147.03, 12/105/0147.04, 12/105/0148.02, 12/105/0148.03, 12/105/0148.04,
12/105/0149.03, 12/105/0149.04, 12/105/0149.05, 12/105/0149.06, 12/105/0150.00, 12/105/0151.01, 12/105/0151.02
12/105/0152.00, 12/105/0153.01, 12/105/0153.02, 12/105/0154.01, 12/105/0154.02, 12/105/0154.04, 12/105/0154.05,
12/105/0155.00, 12/105/0156.00, 12/105/0157.01, 12/105/0157.02, 12/105/0158.01, 12/105/0158.02, 12/105/0159.00,
12/105/0160.01, 12/105/0160.02, 12/105/0160.03, 12/105/0161.00, 12/105/0164.00, 12/105/9800.00



A map of MSA 33100 Miami-Fort Lauderdale-West Palm Beach FL
 Income as % of the MSA Median: Upper-Income (512), Middle-Income (456), Moderate-Income (394), Low-Income (79), All Others (56)
 Outline - shown in a Black outline, County - shown in a pink outline, Tract 2020 - shown in a Black outline, Town - shown in a yellow outline, Water - shown in a blue outline, State - shown in a Black outline

FLORIDA

MSA 33100 Miami-Fort Lauderdale-West Palm Beach FL

FORMAT: STATECODE/COUNTYCODE/TRACTCODE

12/086/0083.10, 12/086/0083.11, 12/086/0083.12, 12/086/0083.13, 12/086/0083.14, 12/086/0083.15, 12/086/0084.09, 12/086/0084.15, 12/086/0084.16, 12/086/0084.18, 12/086/0084.19, 12/086/0084.20, 12/086/0084.21, 12/086/0084.22, 12/086/0084.23, 12/086/0084.24, 12/086/0084.25, 12/086/0084.26, 12/086/0084.27, 12/086/0084.28, 12/086/0084.29, 12/086/0084.30, 12/086/0084.31, 12/086/0085.02, 12/086/0085.03, 12/086/0085.04, 12/086/0086.01, 12/086/0086.03, 12/086/0086.04, 12/086/0087.02, 12/086/0087.03, 12/086/0087.04, 12/086/0088.05, 12/086/0088.06, 12/086/0088.07, 12/086/0088.08, 12/086/0088.09, 12/086/0088.10, 12/086/0089.04, 12/086/0089.06, 12/086/0089.07, 12/086/0089.08, 12/086/0089.09, 12/086/0089.10, 12/086/0089.11, 12/086/0090.10, 12/086/0090.14, 12/086/0090.15, 12/086/0090.20, 12/086/0090.21, 12/086/0090.22, 12/086/0090.24, 12/086/0090.26, 12/086/0090.27, 12/086/0090.28, 12/086/0090.29, 12/086/0090.30, 12/086/0090.31, 12/086/0090.39, 12/086/0090.40, 12/086/0090.43, 12/086/0090.44, 12/086/0090.48, 12/086/0090.49, 12/086/0090.50, 12/086/0090.51, 12/086/0090.52, 12/086/0090.53, 12/086/0090.54, 12/086/0090.55, 12/086/0090.56, 12/086/0090.57, 12/086/0090.58, 12/086/0090.59, 12/086/0090.60, 12/086/0090.61, 12/086/0090.62

12/086/0090.63, 12/086/0090.64, 12/086/0090.65, 12/086/0090.66, 12/086/0091.01, 12/086/0091.02, 12/086/0092.00, 12/086/0093.05, 12/086/0093.12, 12/086/0093.14, 12/086/0093.15, 12/086/0093.16, 12/086/0093.17, 12/086/0093.18, 12/086/0093.19, 12/086/0093.20, 12/086/0093.21, 12/086/0093.22, 12/086/0093.23, 12/086/0093.24, 12/086/0093.25, 12/086/0093.26, 12/086/0093.27, 12/086/0094.01, 12/086/0094.02, 12/086/0095.03, 12/086/0095.04, 12/086/0095.05, 12/086/0095.06, 12/086/0096.01, 12/086/0096.02, 12/086/0097.03, 12/086/0097.04, 12/086/0097.05, 12/086/0097.06, 12/086/0098.03, 12/086/0098.04, 12/086/0098.06, 12/086/0098.09, 12/086/0098.10, 12/086/0098.11, 12/086/0098.12, 12/086/0099.03, 12/086/0099.04, 12/086/0099.05, 12/086/0099.06, 12/086/0099.07, 12/086/0099.08, 12/086/0099.09, 12/086/0100.10, 12/086/0100.12, 12/086/0100.13, 12/086/0100.15, 12/086/0100.16, 12/086/0100.17, 12/086/0100.18, 12/086/0100.19, 12/086/0100.20, 12/086/0100.21, 12/086/0100.22, 12/086/0100.23, 12/086/0100.24, 12/086/0100.25, 12/086/0100.26, 12/086/0101.93, 12/086/0101.98, 12/086/0102.01, 12/086/0102.05, 12/086/0102.07, 12/086/0102.08, 12/086/0102.09, 12/086/0102.11, 12/086/0102.12, 12/086/0102.13, 12/086/0102.14, 12/086/0103.01, 12/086/0103.02

12/086/0103.03, 12/086/0104.00, 12/086/0105.01, 12/086/0105.02, 12/086/0106.04, 12/086/0106.08, 12/086/0106.09, 12/086/0106.10, 12/086/0106.13, 12/086/0106.18, 12/086/0106.19, 12/086/0106.20, 12/086/0106.21, 12/086/0106.22, 12/086/0106.23, 12/086/0106.24, 12/086/0106.25, 12/086/0106.26, 12/086/0107.05, 12/086/0107.06, 12/086/0107.07, 12/086/0107.08, 12/086/0107.09, 12/086/0107.10, 12/086/0108.03, 12/086/0108.04, 12/086/0108.05, 12/086/0108.06, 12/086/0109.00, 12/086/0110.03, 12/086/0110.08, 12/086/0110.09, 12/086/0110.10, 12/086/0110.11, 12/086/0110.12, 12/086/0110.13, 12/086/0110.14, 12/086/0110.15, 12/086/0111.03, 12/086/0111.04, 12/086/0111.05, 12/086/0111.06, 12/086/0112.03, 12/086/0112.04, 12/086/0112.05, 12/086/0112.06, 12/086/0113.01, 12/086/0113.02, 12/086/0114.05, 12/086/0114.06, 12/086/0114.07, 12/086/0114.08, 12/086/0114.09, 12/086/0114.10, 12/086/0114.11, 12/086/0114.12, 12/086/0115.00, 12/086/0116.01, 12/086/0116.02, 12/086/0117.01, 12/086/0117.02, 12/086/0118.00, 12/086/0119.00, 12/086/0120.01, 12/086/0120.02, 12/086/0121.01, 12/086/0121.02, 12/086/0121.03, 12/086/0121.04, 12/086/0121.05, 12/086/0122.00, 12/086/0122.01, 12/086/0123.02, 12/086/0124.01, 12/086/0124.02, 12/086/0124.03, 12/086/0125.01

12/086/0125.02, 12/086/0126.01, 12/086/0126.02, 12/086/0127.01, 12/086/0127.02, 12/086/0128.01, 12/086/0128.02, 12/086/0129.00, 12/086/0130.00, 12/086/0131.00, 12/086/0132.01, 12/086/0132.02, 12/086/0133.01, 12/086/0133.02, 12/086/0134.00, 12/086/0135.00, 12/086/0136.00, 12/086/0137.00, 12/086/0138.01, 12/086/0138.02, 12/086/0139.00, 12/086/0141.00, 12/086/0142.00, 12/086/0143.00, 12/086/0144.00, 12/086/0145.00, 12/086/0146.01, 12/086/0146.02, 12/086/0147.01, 12/086/0147.02, 12/086/0148.00, 12/086/0149.00, 12/086/0150.01, 12/086/0150.02, 12/086/0151.01, 12/086/0151.02, 12/086/0151.03, 12/086/0152.01, 12/086/0152.02, 12/086/0153.00, 12/086/0154.00, 12/086/0155.01, 12/086/0155.02, 12/086/0156.00, 12/086/0157.00, 12/086/0158.00, 12/086/0159.00, 12/086/0160.00, 12/086/0161.00, 12/086/0162.00, 12/086/0163.00, 12/086/0164.01, 12/086/0164.02, 12/086/0165.01, 12/086/0165.02, 12/086/0166.00, 12/086/0167.00, 12/086/0168.00, 12/086/0169.00, 12/086/0170.00, 12/086/0171.01, 12/086/0171.02, 12/086/0172.00, 12/086/0173.00, 12/086/0174.01, 12/086/0174.02, 12/086/0175.00, 12/086/0176.00, 12/086/0177.00, 12/086/0178.00, 12/086/0179.01, 12/086/0179.02, 12/086/0180.01, 12/086/0180.02, 12/086/0180.03, 12/086/0181.00, 12/086/0182.00

12/086/0183.00, 12/086/0184.00, 12/086/0185.00, 12/086/0186.01, 12/086/0186.02, 12/086/0187.00, 12/086/0188.01, 12/086/0188.02, 12/086/0188.03, 12/086/0189.01, 12/086/0189.02, 12/086/0190.00, 12/086/0191.00, 12/086/0192.00, 12/086/0193.01, 12/086/0193.02, 12/086/0194.01, 12/086/0194.02, 12/086/0195.01, 12/086/0195.02, 12/086/0196.00, 12/086/0197.00, 12/086/0198.01, 12/086/0198.02, 12/086/0199.01, 12/086/0199.02, 12/086/0200.01, 12/086/0200.02, 12/086/0201.00, 12/086/0202.00, 12/086/0203.00, 12/086/4901.00, 12/086/9801.00, 12/086/9802.00, 12/086/9803.00, 12/086/9804.00, 12/086/9805.00, 12/086/9806.00, 12/086/9807.00, 12/086/9808.00, 12/086/9809.00, 12/086/9810.00, 12/086/9811.00, 12/086/9812.00, 12/086/9813.00, 12/086/9900.00, 12/099/0001.02, 12/099/0001.03, 12/099/0001.04, 12/099/0002.02, 12/099/0002.04, 12/099/0002.08, 12/099/0002.10, 12/099/0002.11, 12/099/0002.13, 12/099/0002.14, 12/099/0002.16, 12/099/0002.17, 12/099/0002.18, 12/099/0002.19, 12/099/0002.20, 12/099/0002.21, 12/099/0002.22, 12/099/0002.23, 12/099/0003.01, 12/099/0003.03, 12/099/0003.04, 12/099/0004.05, 12/099/0004.06, 12/099/0004.07, 12/099/0004.08, 12/099/0004.10, 12/099/0005.05, 12/099/0005.07, 12/099/0005.09, 12/099/0005.12, 12/099/0005.13

FLORIDA

MSA 33100 Miami-Fort Lauderdale-West Palm Beach FL

FORMAT: STATECODE/COUNTYCODE/TRACTCODE

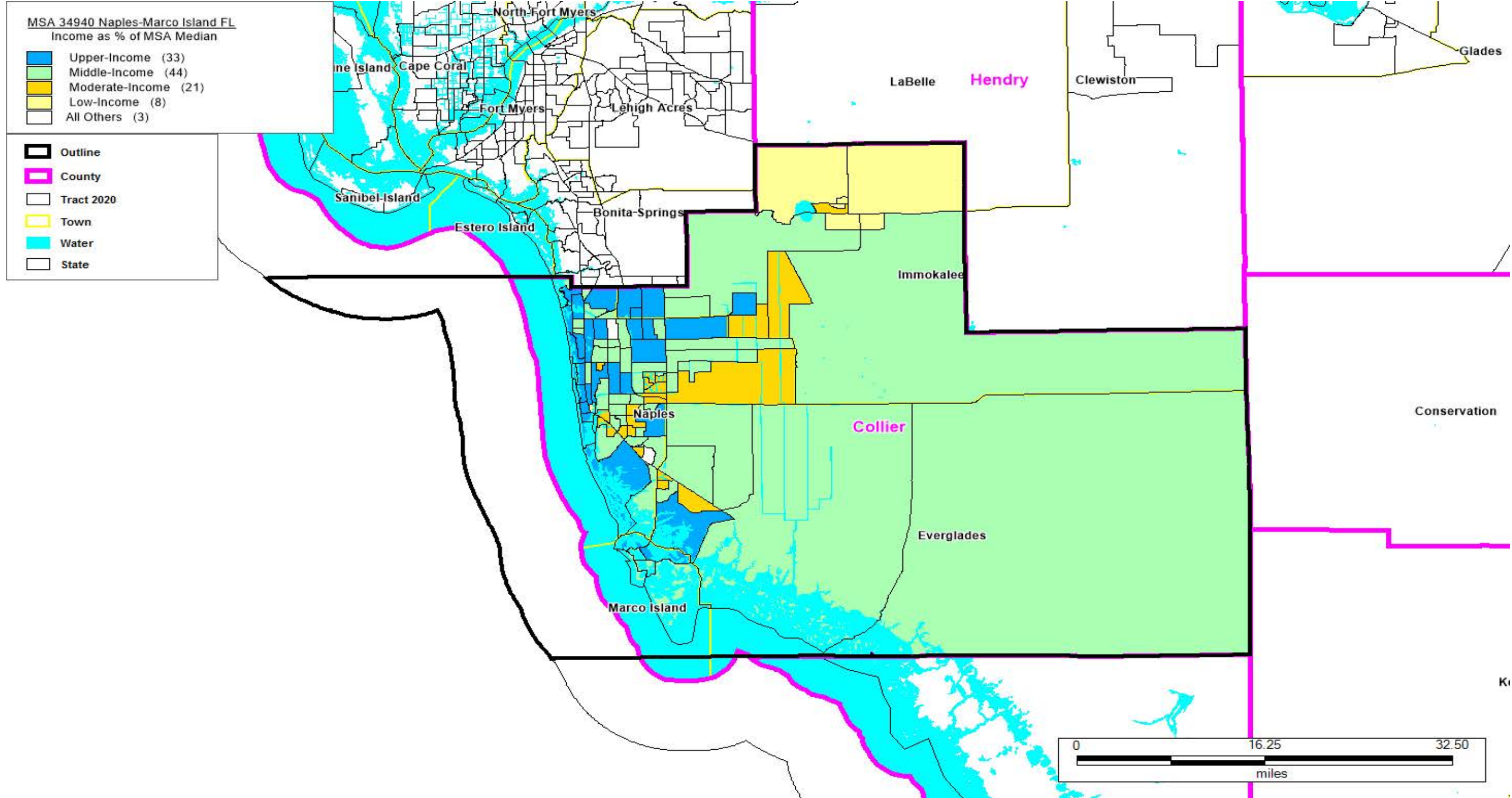
12/099/0006.00, 12/099/0007.02, 12/099/0007.03, 12/099/0008.03, 12/099/0008.05, 12/099/0009.02, 12/099/0009.03, 12/099/0009.04, 12/099/0009.05, 12/099/0010.02, 12/099/0010.03, 12/099/0010.04, 12/099/0011.01, 12/099/0011.02, 12/099/0012.00, 12/099/0013.01, 12/099/0013.02, 12/099/0014.02, 12/099/0014.03, 12/099/0014.04, 12/099/0015.00, 12/099/0016.00, 12/099/0017.00, 12/099/0018.01, 12/099/0018.02, 12/099/0019.04, 12/099/0019.07, 12/099/0019.09, 12/099/0019.10, 12/099/0019.11, 12/099/0019.12, 12/099/0019.13, 12/099/0019.16, 12/099/0019.17, 12/099/0019.18, 12/099/0019.19, 12/099/0019.20, 12/099/0019.21, 12/099/0020.05, 12/099/0020.06, 12/099/0021.00, 12/099/0022.00, 12/099/0023.00, 12/099/0024.00, 12/099/0026.00, 12/099/0027.01, 12/099/0027.02, 12/099/0027.03, 12/099/0028.00, 12/099/0029.00, 12/099/0030.00, 12/099/0031.01, 12/099/0031.02, 12/099/0032.01, 12/099/0032.02, 12/099/0033.00, 12/099/0034.00, 12/099/0035.07, 12/099/0035.12, 12/099/0035.13, 12/099/0035.14, 12/099/0036.00, 12/099/0037.00, 12/099/0038.01, 12/099/0038.02, 12/099/0039.01, 12/099/0039.02, 12/099/0040.05, 12/099/0040.07, 12/099/0040.08, 12/099/0040.09, 12/099/0040.10, 12/099/0040.11, 12/099/0040.12, 12/099/0040.13, 12/099/0041.01, 12/099/0041.02

12/099/0042.03, 12/099/0042.04, 12/099/0042.05, 12/099/0042.06, 12/099/0042.07, 12/099/0043.00, 12/099/0044.01, 12/099/0044.02, 12/099/0045.00, 12/099/0046.01, 12/099/0046.02, 12/099/0047.02, 12/099/0047.04, 12/099/0047.05, 12/099/0047.06, 12/099/0048.10, 12/099/0048.13, 12/099/0048.15, 12/099/0048.16, 12/099/0048.17, 12/099/0048.18, 12/099/0048.19, 12/099/0048.20, 12/099/0048.21, 12/099/0048.22, 12/099/0048.23, 12/099/0049.02, 12/099/0049.03, 12/099/0049.04, 12/099/0050.00, 12/099/0051.01, 12/099/0051.02, 12/099/0052.02, 12/099/0052.03, 12/099/0052.04, 12/099/0053.00, 12/099/0054.11, 12/099/0054.12, 12/099/0054.13, 12/099/0055.01, 12/099/0055.02, 12/099/0056.01, 12/099/0056.02, 12/099/0057.02, 12/099/0057.03, 12/099/0057.04, 12/099/0058.07, 12/099/0058.10, 12/099/0058.11, 12/099/0058.12, 12/099/0058.13, 12/099/0058.14, 12/099/0058.15, 12/099/0058.18, 12/099/0058.19, 12/099/0058.20, 12/099/0058.21, 12/099/0059.16, 12/099/0059.17, 12/099/0059.18, 12/099/0059.21, 12/099/0059.22, 12/099/0059.23, 12/099/0059.26, 12/099/0059.30, 12/099/0059.31, 12/099/0059.33, 12/099/0059.34, 12/099/0059.36, 12/099/0059.37, 12/099/0059.38, 12/099/0059.39, 12/099/0059.40, 12/099/0059.42, 12/099/0059.43, 12/099/0059.44, 12/099/0059.45

12/099/0059.46, 12/099/0059.47, 12/099/0059.49, 12/099/0059.50, 12/099/0059.51, 12/099/0059.52, 12/099/0059.53, 12/099/0059.54, 12/099/0059.55, 12/099/0059.57, 12/099/0059.58, 12/099/0059.59, 12/099/0059.60, 12/099/0059.61, 12/099/0060.05, 12/099/0060.06, 12/099/0060.07, 12/099/0060.08, 12/099/0060.09, 12/099/0060.10, 12/099/0060.11, 12/099/0060.12, 12/099/0061.00, 12/099/0062.01, 12/099/0062.02, 12/099/0062.03, 12/099/0063.01, 12/099/0063.02, 12/099/0064.01, 12/099/0064.02, 12/099/0065.01, 12/099/0065.02, 12/099/0066.02, 12/099/0066.04, 12/099/0066.06, 12/099/0066.07, 12/099/0067.00, 12/099/0068.01, 12/099/0068.02, 12/099/0069.06, 12/099/0069.07, 12/099/0069.08, 12/099/0069.09, 12/099/0069.10, 12/099/0069.11, 12/099/0069.12, 12/099/0070.05, 12/099/0070.06, 12/099/0070.07, 12/099/0070.08, 12/099/0070.09, 12/099/0070.10, 12/099/0070.11, 12/099/0070.12, 12/099/0070.13, 12/099/0071.00, 12/099/0072.02, 12/099/0072.04, 12/099/0072.05, 12/099/0072.06, 12/099/0072.07, 12/099/0072.08, 12/099/0073.01, 12/099/0073.02, 12/099/0074.07, 12/099/0074.10, 12/099/0074.12, 12/099/0074.14, 12/099/0074.20, 12/099/0074.21, 12/099/0075.01, 12/099/0075.04, 12/099/0075.05, 12/099/0076.03, 12/099/0076.04, 12/099/0076.05, 12/099/0076.10

12/099/0076.12, 12/099/0076.13, 12/099/0076.14, 12/099/0076.15, 12/099/0076.16, 12/099/0076.19, 12/099/0076.20, 12/099/0076.21, 12/099/0076.22, 12/099/0076.23, 12/099/0076.24, 12/099/0077.05, 12/099/0077.10, 12/099/0077.16, 12/099/0077.21, 12/099/0077.23, 12/099/0077.24, 12/099/0077.25, 12/099/0077.30, 12/099/0077.31, 12/099/0077.32, 12/099/0077.35, 12/099/0077.36, 12/099/0077.38, 12/099/0077.39, 12/099/0077.40, 12/099/0077.41, 12/099/0077.42, 12/099/0077.43, 12/099/0077.46, 12/099/0077.47, 12/099/0077.48, 12/099/0077.49, 12/099/0077.50, 12/099/0077.51, 12/099/0077.52, 12/099/0077.54, 12/099/0077.57, 12/099/0077.58, 12/099/0077.59, 12/099/0077.63, 12/099/0077.64, 12/099/0077.66, 12/099/0077.67, 12/099/0077.68, 12/099/0077.69, 12/099/0077.70, 12/099/0077.71, 12/099/0077.72, 12/099/0077.73, 12/099/0077.74, 12/099/0077.75, 12/099/0077.76, 12/099/0077.77, 12/099/0077.78, 12/099/0077.79, 12/099/0077.80, 12/099/0078.05, 12/099/0078.12, 12/099/0078.13, 12/099/0078.14, 12/099/0078.18, 12/099/0078.20, 12/099/0078.21, 12/099/0078.23, 12/099/0078.30, 12/099/0078.31, 12/099/0078.32, 12/099/0078.33, 12/099/0078.34, 12/099/0078.35, 12/099/0078.37, 12/099/0078.38, 12/099/0078.40, 12/099/0078.41, 12/099/0078.42, 12/099/0078.43

12/099/0078.44, 12/099/0078.45, 12/099/0078.46, 12/099/0078.47, 12/099/0078.48, 12/099/0078.49, 12/099/0078.50, 12/099/0078.51, 12/099/0078.52, 12/099/0078.53, 12/099/0079.09, 12/099/0079.13, 12/099/0079.14, 12/099/0079.15, 12/099/0079.16, 12/099/0079.17, 12/099/0079.18, 12/099/0079.19, 12/099/0080.01, 12/099/0080.02, 12/099/0081.01, 12/099/0081.02, 12/099/0082.01, 12/099/0082.02, 12/099/0082.03, 12/099/0083.01, 12/099/0083.02, 12/099/9800.00, 12/099/9801.00, 12/099/9802.00, 12/099/9804.00, 12/099/9805.00, 12/099/9900.00, 12/099/9901.00



A map of MSA 34940 Naples-Marco Island FL

Income as % of the MSA Median: Upper-Income (33), Middle-Income (44), Moderate-Income (21), Low-Income (8), All Others (3)

Outline - shown in a Black outline, County - shown in a pink outline, Tract 2020 - shown in a Black outline, Town - shown in a yellow outline, Water - shown in a blue outline, State - shown in a Black outline

FLORIDA

MSA 34940 Naples-Marco Island FL

FORMAT: STATECODE/COUNTYCODE/TRACTCODE

12/021/0001.01, 12/021/0001.02, 12/021/0002.00, 12/021/0003.01, 12/021/0003.02, 12/021/0004.01, 12/021/0004.02, 12/021/0005.00, 12/021/0006.00, 12/021/0007.00, 12/021/0101.02, 12/021/0101.07, 12/021/0101.08, 12/021/0101.09, 12/021/0101.10, 12/021/0101.11, 12/021/0101.12, 12/021/0101.13, 12/021/0101.14, 12/021/0102.05, 12/021/0102.08, 12/021/0102.09, 12/021/0102.10, 12/021/0102.11, 12/021/0102.13, 12/021/0102.15, 12/021/0102.16, 12/021/0102.17, 12/021/0103.00, 12/021/0104.01, 12/021/0104.08, 12/021/0104.11, 12/021/0104.16, 12/021/0104.19, 12/021/0104.20, 12/021/0104.21, 12/021/0104.22, 12/021/0104.23, 12/021/0104.24, 12/021/0104.25, 12/021/0104.26, 12/021/0104.27, 12/021/0104.28, 12/021/0104.29, 12/021/0104.30, 12/021/0104.31, 12/021/0104.32, 12/021/0104.33, 12/021/0104.34, 12/021/0104.35, 12/021/0104.36, 12/021/0104.37, 12/021/0104.38, 12/021/0105.08, 12/021/0105.11, 12/021/0105.12, 12/021/0105.13, 12/021/0105.14, 12/021/0105.15, 12/021/0105.16, 12/021/0105.17, 12/021/0105.18, 12/021/0105.19, 12/021/0105.20, 12/021/0106.01, 12/021/0106.02, 12/021/0106.04, 12/021/0106.05, 12/021/0106.06, 12/021/0107.01, 12/021/0107.02, 12/021/0108.01, 12/021/0108.04, 12/021/0108.05, 12/021/0108.06, 12/021/0108.07, 12/021/0108.08, 12/021/0109.02, 12/021/0109.04, 12/021/0109.05, 12/021/0109.06, 12/021/0109.07, 12/021/0110.03, 12/021/0111.03, 12/021/0111.07, 12/021/0111.08, 12/021/0111.09, 12/021/0111.10, 12/021/0111.11, 12/021/0111.12, 12/021/0111.13, 12/021/0111.14, 12/021/0112.04, 12/021/0112.05, 12/021/0112.06, 12/021/0112.07, 12/021/0112.08, 12/021/0112.09, 12/021/0112.10, 12/021/0112.11, 12/021/0112.12, 12/021/0112.13, 12/021/0112.14, 12/021/0113.03, 12/021/0113.04, 12/021/0113.05, 12/021/0113.06, 12/021/0114.00, 12/021/9900.00