

A map of MSA 25940 Hilton Head Island-Bluffton-Port Royal SC  
 Income as % of the MSA Median: Upper-Income (16), Middle-Income (18), Moderate-Income (11), Low-Income (2), All Others (3)  
 Outline - shown in a Black outline, County - shown in a pink outline, Tract 2020 - shown in a Black outline, Town - shown in a yellow outline, Water - shown in a blue outline, State - shown in a Black outline

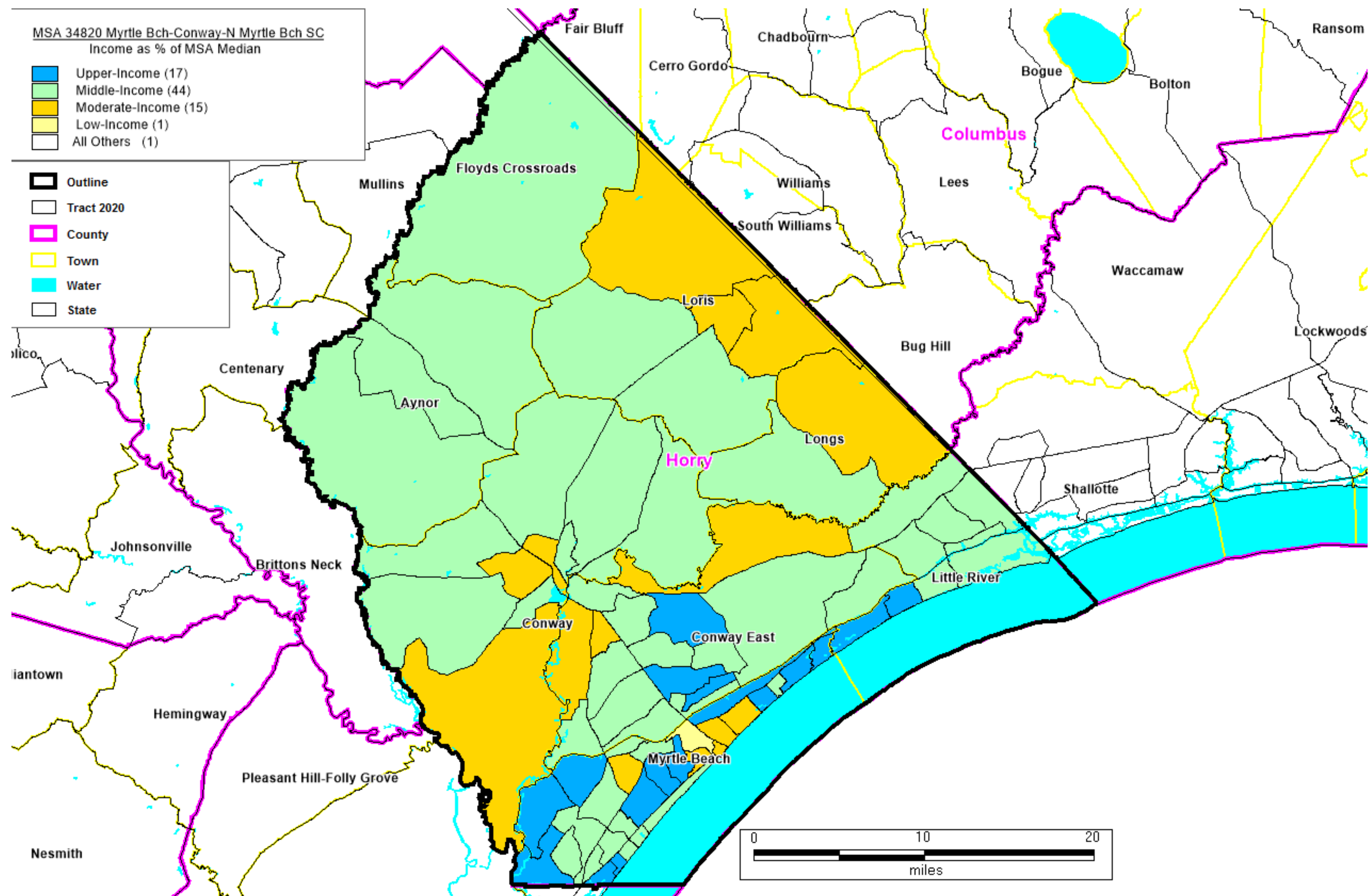
## SOUTH CAROLINA

**MSA 25940 Hilton Head Island-Bluffton-Port Royal SC**

**FORMAT: STATECODE/COUNTYCODE/TRACTCODE**

45/013/0001.00, 45/013/0002.00, 45/013/0003.00, 45/013/0004.00, 45/013/0005.01, 45/013/0005.02, 45/013/0005.03, 45/013/0006.00, 45/013/0007.00, 45/013/0008.00, 45/013/0009.01, 45/013/0009.02, 45/013/0009.03, 45/013/0010.00, 45/013/0011.01, 45/013/0011.03, 45/013/0011.04, 45/013/0012.00, 45/013/0021.01, 45/013/0021.02, 45/013/0021.03, 45/013/0021.05, 45/013/0021.06, 45/013/0021.07, 45/013/0021.08, 45/013/0021.09, 45/013/0021.10, 45/013/0022.01, 45/013/0022.02, 45/013/0101.00, 45/013/0102.00, 45/013/0103.00, 45/013/0104.00, 45/013/0105.00, 45/013/0106.00, 45/013/0107.00, 45/013/0108.00, 45/013/0109.00, 45/013/0110.00, 45/013/0111.00, 45/013/0112.00, 45/013/0113.00, 45/013/9901.00, 45/053/9501.00, 45/053/9502.01, 45/053/9502.03, 45/053/9502.04, 45/053/9503.01, 45/053/9503.02, 45/053/9901.00





A map of MSA 34820 Myrtle Beach-Conway-North Myrtle Beach SC  
Income as % of the MSA Median: Upper-Income (17), Middle-Income (44), Moderate-Income (15), Low-Income (1), All Others (1)

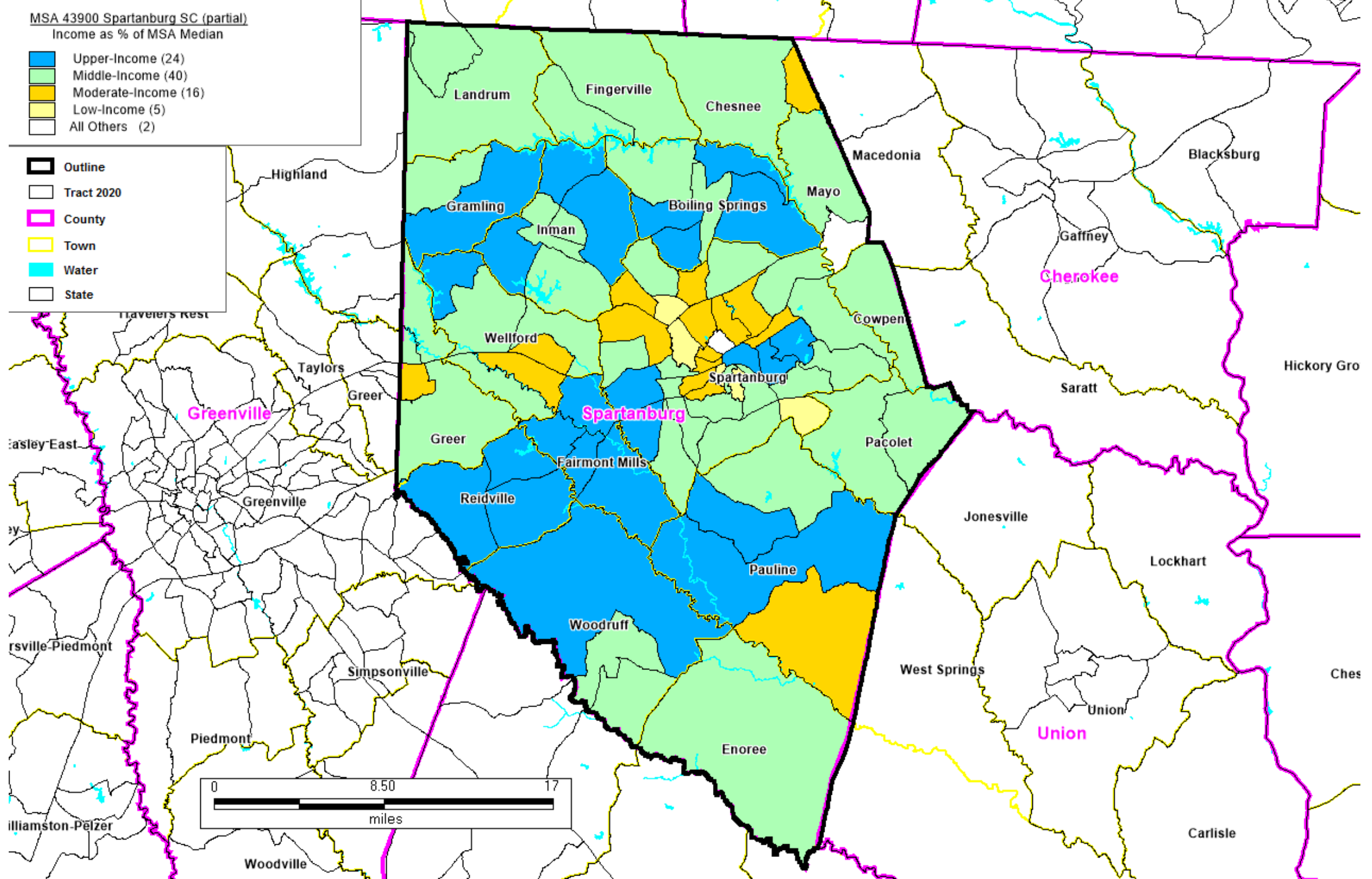
Outline - shown in a Black outline, County - shown in a pink outline, Tract 2020 - shown in a Black outline, Town - shown in a yellow outline, Water - shown in a blue outline, State - shown in a Black outline

## SOUTH CAROLINA

**MSA 34820 Myrtle Bch-Conway-N Myrtle Bch SC**

**FORMAT: STATECODE/COUNTYCODE/TRACTCODE**

45/051/0101.00, 45/051/0201.00, 45/051/0202.01, 45/051/0202.02, 45/051/0203.01, 45/051/0203.02, 45/051/0301.02, 45/051/0301.04, 45/051/0401.01, 45/051/0401.02, 45/051/0401.03, 45/051/0401.04, 45/051/0401.05, 45/051/0402.00, 45/051/0403.00, 45/051/0404.00, 45/051/0405.00, 45/051/0501.02, 45/051/0502.00, 45/051/0503.03, 45/051/0504.01, 45/051/0504.02, 45/051/0505.00, 45/051/0506.00, 45/051/0507.00, 45/051/0509.01, 45/051/0509.02, 45/051/0510.00, 45/051/0512.01, 45/051/0512.02, 45/051/0513.01, 45/051/0513.02, 45/051/0514.03, 45/051/0514.04, 45/051/0514.05, 45/051/0514.06, 45/051/0515.01, 45/051/0515.02, 45/051/0515.03, 45/051/0516.03, 45/051/0516.05, 45/051/0516.06, 45/051/0516.07, 45/051/0516.08, 45/051/0516.09, 45/051/0517.00, 45/051/0601.01, 45/051/0601.02, 45/051/0602.03, 45/051/0602.04, 45/051/0602.06, 45/051/0602.07, 45/051/0602.09, 45/051/0602.10, 45/051/0602.11, 45/051/0603.01, 45/051/0603.03, 45/051/0603.09, 45/051/0603.10, 45/051/0604.03, 45/051/0604.04, 45/051/0604.05, 45/051/0604.06, 45/051/0701.01, 45/051/0701.02, 45/051/0702.00, 45/051/0703.00, 45/051/0704.00, 45/051/0705.00, 45/051/0706.01, 45/051/0706.02, 45/051/0707.01, 45/051/0707.02, 45/051/0801.01, 45/051/0801.02, 45/051/0802.00, 45/051/9801.00  
45/051/9901.00



A map of MSA 43900 Spartanburg SC (partial)  
 Income as % of the MSA Median: Upper-Income (24), Middle-Income (40), Moderate-Income (16), Low-Income (5), All Others (2)  
 Outline - shown in a Black outline, County - shown in a pink outline, Tract 2020 - shown in a Black outline, Town - shown in a yellow outline, Water - shown in a blue outline, State - shown in a Black outline

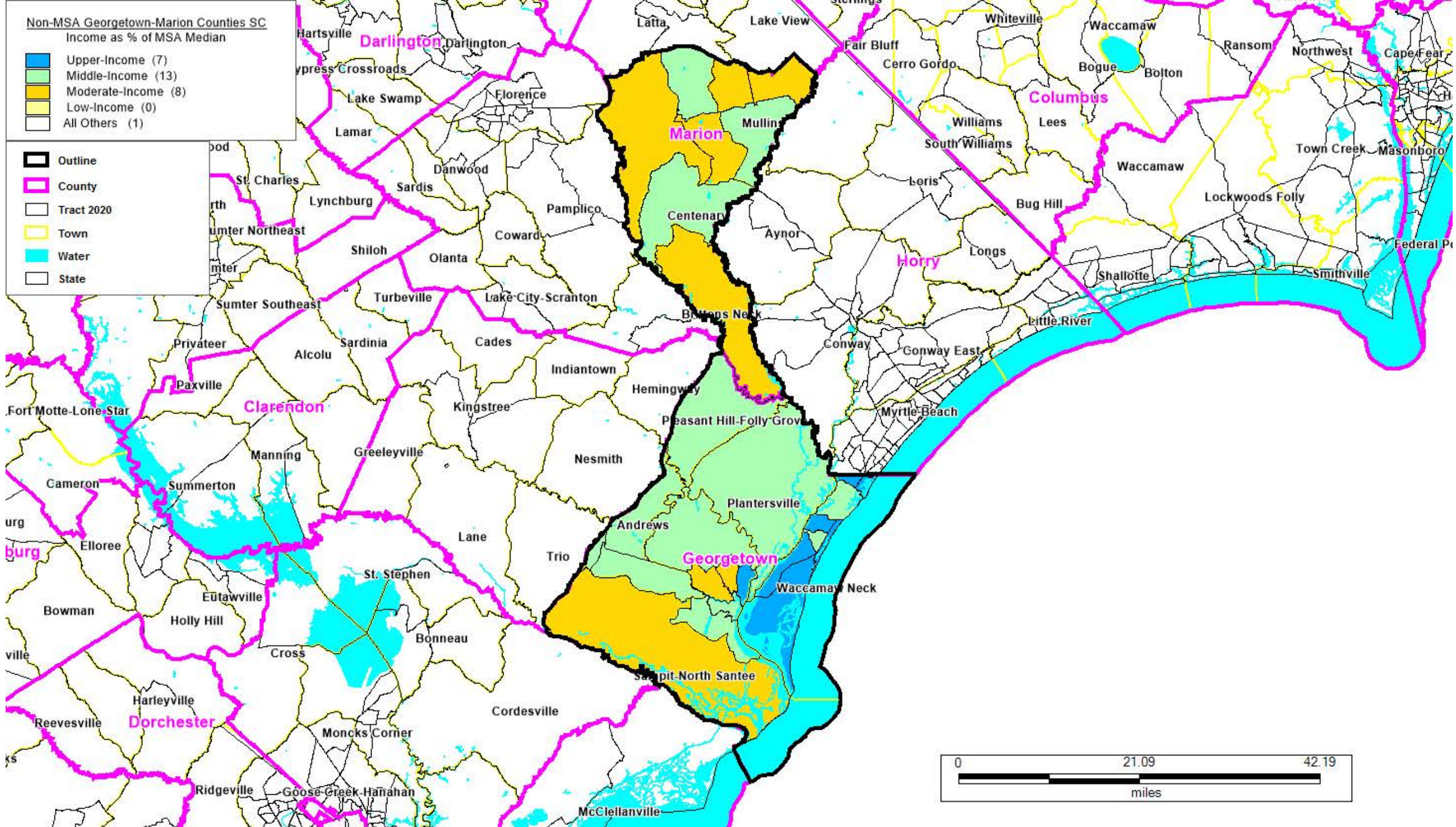
## SOUTH CAROLINA

**MSA 43900 Spartanburg SC (partial)**

**FORMAT: STATECODE/COUNTYCODE/TRACTCODE**

45/083/0203.01, 45/083/0204.00, 45/083/0205.00, 45/083/0206.01, 45/083/0206.02, 45/083/0206.03, 45/083/0207.01, 45/083/0207.02, 45/083/0208.00, 45/083/0209.00, 45/083/0210.01, 45/083/0211.00, 45/083/0212.00, 45/083/0213.01, 45/083/0213.02, 45/083/0213.03, 45/083/0214.01, 45/083/0214.02, 45/083/0214.03, 45/083/0215.00, 45/083/0216.00, 45/083/0217.00, 45/083/0218.03, 45/083/0218.04, 45/083/0218.05, 45/083/0218.06, 45/083/0219.02, 45/083/0219.03, 45/083/0219.04, 45/083/0220.03, 45/083/0220.04, 45/083/0220.05, 45/083/0220.06, 45/083/0220.07, 45/083/0221.01, 45/083/0221.02, 45/083/0222.01, 45/083/0222.02, 45/083/0223.03, 45/083/0223.04, 45/083/0223.05, 45/083/0223.06, 45/083/0224.04, 45/083/0224.05, 45/083/0224.06, 45/083/0224.07, 45/083/0224.08, 45/083/0224.09, 45/083/0224.10, 45/083/0224.11, 45/083/0225.00, 45/083/0226.00, 45/083/0227.01, 45/083/0227.02, 45/083/0228.03, 45/083/0228.04, 45/083/0228.05, 45/083/0228.06, 45/083/0229.01, 45/083/0229.02, 45/083/0230.02, 45/083/0230.03, 45/083/0230.04, 45/083/0231.01, 45/083/0231.03, 45/083/0231.04, 45/083/0232.01, 45/083/0232.02, 45/083/0233.01, 45/083/0233.02, 45/083/0234.01, 45/083/0234.02, 45/083/0234.05, 45/083/0234.06, 45/083/0234.07, 45/083/0234.08, 45/083/0234.09, 45/083/0235.00, 45/083/0236.01, 45/083/0236.02, 45/083/0237.00, 45/083/0238.03, 45/083/0238.04, 45/083/0238.05, 45/083/0238.06, 45/083/0239.01, 45/083/0239.02





A map of Non-MSA Georgetown-Marion Counties SC

Income as % of the MSA Median: Upper-Income (7), Middle-Income (13), Moderate-Income (8), Low-Income (0), All Others (1)

Outline - shown in a Black outline, County - shown in a pink outline, Tract 2020 - shown in a Black outline, Town - shown in a yellow outline, Water - shown in a blue outline, State - shown in a Black outline

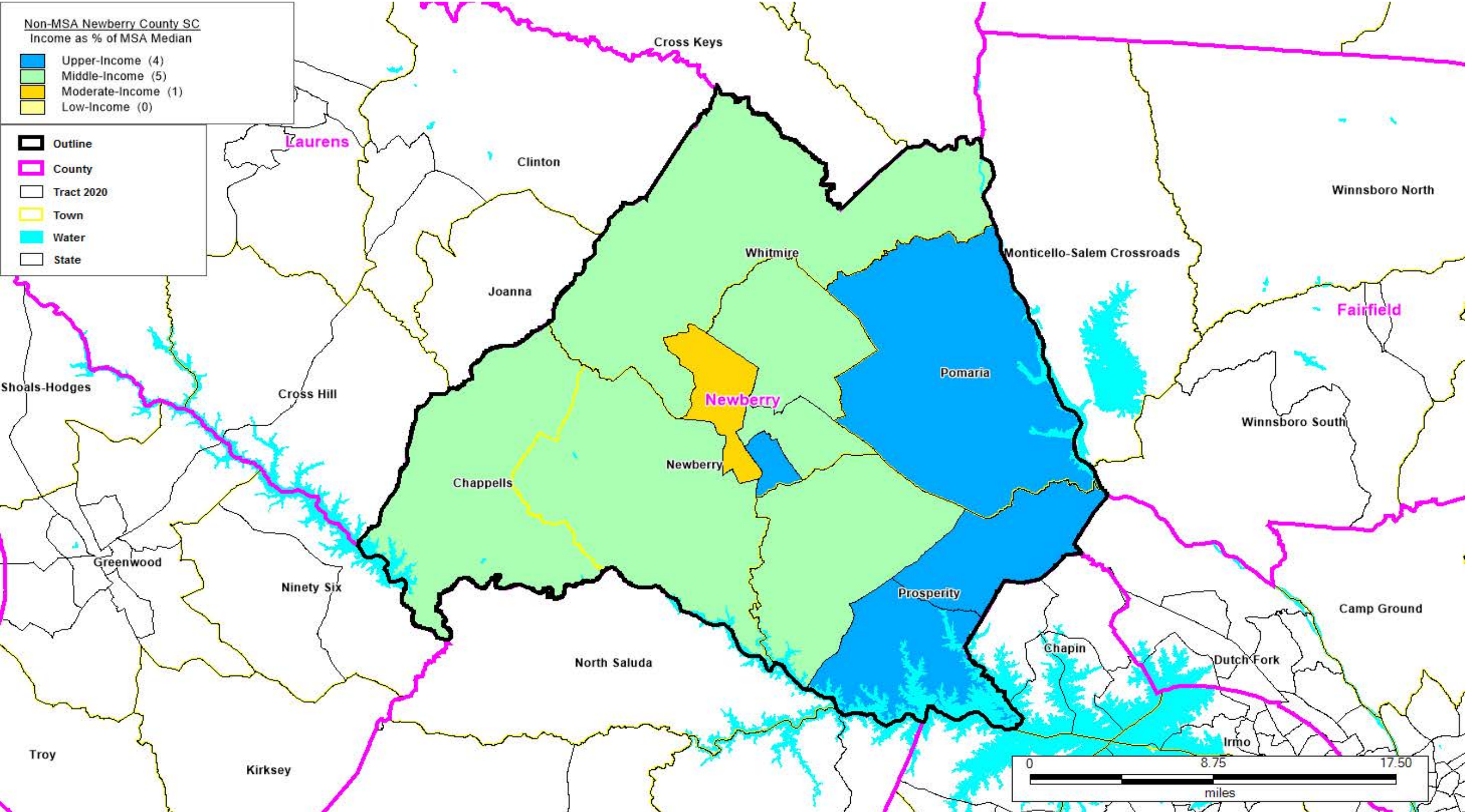
## **SOUTH CAROLINA**

### **Non-MSA Georgetown-Marion Counties SC**

**FORMAT: STATECODE/COUNTYCODE/TRACTCODE**

45/043/9201.00, 45/043/9202.02, 45/043/9202.03, 45/043/9202.04, 45/043/9203.01, 45/043/9203.02, 45/043/9204.00,  
45/043/9205.02, 45/043/9205.04, 45/043/9205.06, 45/043/9205.07, 45/043/9205.08, 45/043/9205.09, 45/043/9205.10,  
45/043/9205.11, 45/043/9206.01, 45/043/9206.02, 45/043/9207.01, 45/043/9207.02, 45/043/9208.00, 45/043/9901.00,  
45/067/9501.00, 45/067/9502.00, 45/067/9503.00, 45/067/9504.00, 45/067/9505.00, 45/067/9506.00, 45/067/9507.00,  
45/067/9508.00





A map of Non-MSA Newberry County SC  
 Income as % of the MSA Median: Upper-Income (4), Middle-Income (5), Moderate-Income (1), Low-Income (0)  
 Outline - shown in a Black outline, County - shown in a pink outline, Tract 2020 - shown in a Black outline, Town - shown in a yellow outline, Water - shown in a blue outline,  
 State - shown in a Black outline

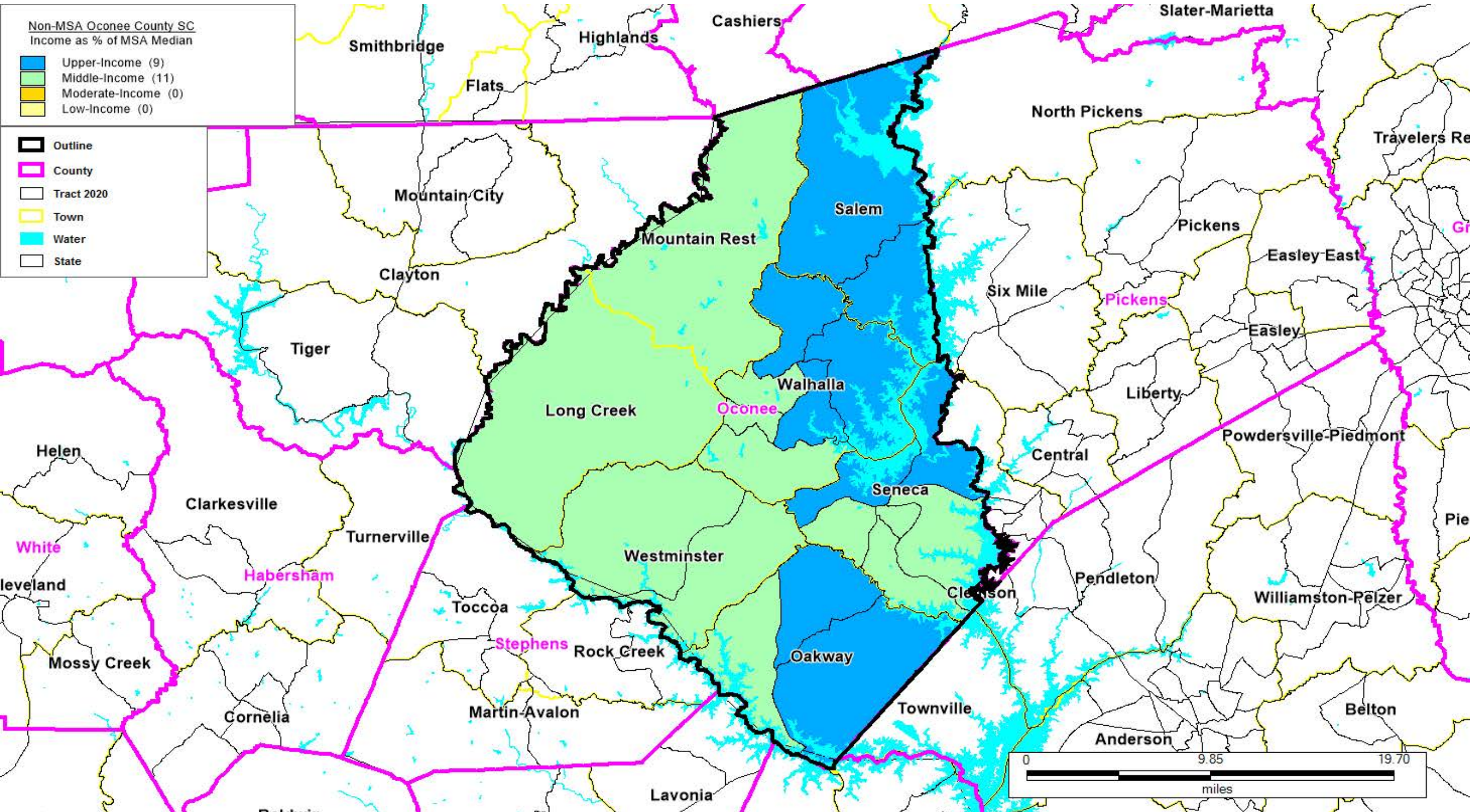
## **SOUTH CAROLINA**

**Non-MSA Newberry County SC**

**FORMAT: STATECODE/COUNTYCODE/TRACTCODE**

45/071/9501.00, 45/071/9502.01, 45/071/9502.03, 45/071/9502.04, 45/071/9503.00, 45/071/9505.02, 45/071/9506.01,  
45/071/9506.03, 45/071/9506.04, 45/071/9507.00





A map of Non-MSA Oconee County SC  
 Income as % of the MSA Median: Upper-Income (9), Middle-Income (11), Moderate-Income (0), Low-Income (0)  
 Outline - shown in a Black outline, County - shown in a pink outline, Tract 2020 - shown in a Black outline, Town - shown in a yellow outline, Water - shown in a blue outline, State - shown in a Black outline



## **SOUTH CAROLINA**

### **Non-MSA Oconee County SC**

**FORMAT: STATECODE/COUNTYCODE/TRACTCODE**

45/073/0301.00, 45/073/0302.01, 45/073/0302.02, 45/073/0303.01, 45/073/0303.02, 45/073/0304.02, 45/073/0304.03,  
45/073/0304.04, 45/073/0305.00, 45/073/0306.01, 45/073/0306.02, 45/073/0307.01, 45/073/0307.02, 45/073/0308.01,  
45/073/0308.02, 45/073/0309.01, 45/073/0309.03, 45/073/0309.04, 45/073/0310.00, 45/073/0311.00